



August 15, 2010

Kevin Mc Carthy
Executive Director
SBWMA/RethinkWaste
610 Elm Street, Suite 202
San Carlos, CA 94070

Dear Kevin:

Enclosed is a copy of the Allied Waste 2010 Second Quarter Report to the SBWMA. Allied Waste will send electronic copies to each jurisdiction.

If you should have any questions or require additional information please call me at (650) 596-6401.

Sincerely,

A handwritten signature in black ink, appearing to read 'E.E. Boyd', written over a diagonal line that extends from the signature down to the 'Cc:' field.

Evan E. Boyd
General Manager

Cc: Cliff Feldman
Robert Hilton



SAN MATEO
QUARTERLY REPORT
FOR THE SBWMA

SECOND QUARTER 2010
APRIL – JUNE

AUGUST 15, 2010

TABLE OF CONTENTS

TITLE/DESCRIPTION

Certification of Accuracy

Definitions

Collections and Operations Summary

Quarterly Liquidated Damages Summary

Recyclable Materials Tonnage & Revenue Statement

Solid Waste Generation in Tons by Jurisdiction & Type - Including
Cumulative Annual Comparisons of Solid Waste Generation

Sorter and Bunker Diversion with C & D Allocation

Residential Recycling Participation by Jurisdiction

Commercial Recycling Participation by Jurisdiction

AW Outreach and School Tours

Quarterly Jurisdiction Demographics



August 15, 2010

Kevin Mc Carthy, Executive Director
SBWMA/Rethink Waste
610 Elm Street, #202
San Carlos, CA 94070-8401

RE: CERTIFICATE OF ACCURACY FOR 2010 QUARTERLY REPORT

In accordance with the requirements of Section 6.04 D of the Agreement, the undersigned, as the responsible Contractor official (as that term is used in the Agreement), hereby certifies under penalty of perjury, that the report submitted herewith is true and correct to the best knowledge of the undersigned.

Allied Waste Services/ BFI Waste Systems of North America, Inc.

By

A handwritten signature in black ink, appearing to read 'E.E. Boyd', written over a horizontal line. A long, thin vertical line extends downwards from the end of the signature.

Evan E. Boyd, General Manager

DEFINITIONS - TYPES OF WASTE INCLUDED ON THE SOLID WASTE GENERATION REPORT

Commercial Waste – MSW hauled by AW under a franchise agreement from businesses, multi-family complexes, and the AW maintenance facility to the SRDC for disposal. Source data is inbound tonnage at the SRDC scale.

Residential Waste – MSW hauled by AW under the franchise agreement from residential households to the SRDC for disposal. Source data is inbound tonnage at the SRDC scale.

Residential Clean Up - Material collected by AW during on call clean ups and hauled to the SRDC for disposal. Source data is route sheet notes.

Self-Haul Transfer Station- Material hauled by individuals and businesses to the SRDC for disposal. Source data is inbound MSW tonnage from Ox Mountain scale less all weighed inbound MSW tonnage at the SRDC scale. These tons are then allocated by jurisdiction based on the yards at the SRDC scale.

Self-Haul Ox Mountain - Material hauled by individuals and businesses to Ox Mountain Sanitary Landfill for disposal. **NO LONGER INCLUDED IN THE REPORT.**

JPA City Vehicles Transfer Station - MSW hauled by a Member Agency vehicle to the SRDC for disposal. Source data is inbound tonnage at the SRDC scale.

Roll-off Franchised Waste Transfer Station – MSW hauled by AW using industrial containers, such as a compactor or debris box, under the franchise agreement. This includes debris box services provided to member agency facilities. Material is delivered to the SRDC for disposal. Source data is inbound tonnage at the SRDC scale.

Roll-off Franchised Waste Ox Mountain – Medical Waste hauled by AW using industrial containers, such as compactor or debris box, under the franchise agreement. This material is not permitted at the SRDC and is delivered directly to Ox Mountain Sanitary Landfill for disposal. Source data is inbound weight tags at the Ox Mountain scale.

Roll-off Non-Franchised Waste Transfer Station – MSW hauled by AW using industrial containers, such as a compactor or debris box, that is not part of the franchise agreement but is delivered to the SRDC for disposal. Source data is inbound tonnage at the SRDC scale.

Roll-off Debris Box Ox Mountain – Debris boxes hauled by a debris box company (such as Timberline, Builders Debris, Arcadia Contractors, Peninsula Debris Box, Bayshore Disposal Debris Box, Forced Dump Debris Boxes, and Redwood Debris Box) to Ox Mountain Sanitary Landfill for disposal. NO LONGER INCLUDED IN THE REPORT.

Commercial (other) – Residual Waste generated from the SRDC MRF that is delivered to the SRDC Transfer Station for disposal. Street Sweeping Waste delivered to the SRDC for disposal. Source data is inbound tonnage at the SRDC scale.

Commercial Recycling – Cardboard, Mixed Paper, and Bottles & Cans collected by AW from commercial businesses and multi-family complexes for processing at the SRDC. Includes services provided using recycle tubs, carts, bins, debris boxes, compactors, or bales. Source data is inbound tonnage at the SRDC scale.

Commercial Organics – Compostable materials such as food scraps and food-soiled paper fiber, wood and other plant materials collected by AW as part of the franchised Commercial Organics Program and delivered to the SRDC for processing. Source data is inbound tonnage at the SRDC scale. This category and source data is new with the Q4 2007 report.

Commercial Other Diversion – Materials collected from commercial businesses, multi-family complexes, and member agency facilities that are diverted from landfill disposal, but not part of the contract defined recycle program or commercial organics program. A majority of this material is yard trimmings and C&D. Source data is inbound tonnage at the SRDC scale. This category and source data is new with the Q4 2007 report.

Residential Curbside Recycling – Cardboard, Mixed Paper, Newspaper and Bottles & Cans collected by AW from residents for processing at the SRDC. Source data is inbound tonnage at the SRDC scale. This source data is new with the Q4 2007 report.

Residential Curbside Plant Materials – Plant Material collected by AW from residents and delivered to the SRDC for processing. Source data is inbound tonnage at the SRDC scale.

Self-Haul Plant Material Transfer Station – Plant Material and Wood hauled by residents and businesses to the SRDC for processing. Source data is inbound Yard Waste tonnage from Newby Island scale plus outbound Yard Waste tonnage from the SRDC scale that was delivered to Bio Fuel Systems Inc. less all weighed inbound Yard Waste & Wood tonnage at the SRDC scale. These tons are then allocated by jurisdiction based on the yards at the SRDC scale.

Self-Haul Plant Material Ox Mountain – Plant Material and wood hauled by residents and businesses to Ox Mountain Sanitary Landfill and diverted from landfill disposal. Material is currently accepted at a 25% reduced rate. **NO LONGER INCLUDED IN THE REPORT.**

Transfer Station Diversion – Material diverted in the transfer station sorter, aggregate recycling and electronic waste recycling programs at the SRDC. Includes diverted material received from Member Agency vehicles and is directly allocated. Self-Haul Plant Material is not included. All other tonnage is allocated based on the monthly self-haul tonnage received from each jurisdiction.

Ox Mountain Diversion – Construction and demolition debris, auto shredder material, concrete and asphalt diverted from landfill disposal at Ox Mountain Sanitary Landfill. **NO LONGER INCLUDED IN THE REPORT.**

Unincorporated/West Bay Sanitary District Self Haul Tracking and Allocations- Within the unincorporated area, North Fair Oaks and West Bay Sanitary District self haul identification is handled by identification of city of origin for materials brought by to the Transfer Station by self haul. Occasionally, materials are allocated to adjacent jurisdictions based on customers' identification of origin.

COLLECTIONS AND OPERATIONS SUMMARY 2010 – Quarter 2

COLLECTIONS AGREEMENT:

RESIDENTIAL & COMMERCIAL FRANCHISED SERVICE

- During the quarter, commercial disposal tonnage declined 0.2% or 64 tons when compared to Q2 2009.
- During the quarter, commercial diversion tonnage increased 3.4% or 359 tons when compared to Q2 2009.
- During the quarter, residential disposal tonnage increased 0.2% or 41 tons when compared to Q2 2009.
- During the quarter, residential diversion tonnage increased 6.7% or 1452 tons when compared to Q2 2009.
- There was one incident of private property damage during Q2 2010.
- Liquidated Damage incidents, year-to-date, have declined over 18% when compared to 2009.
- Average Hold Time for customer service calls was 10 seconds for Q2 2010.

2010 LIQUIDATED DAMAGES



11.03, B.1a. Failure to commence service to a new recipient within 7 days

													Less:				2010 Total	Annual Allowance	Net # of Incidents	LD per Incident	Total LD
	JAN	FEB	MAR	Q1 Total	APR	MAY	JUN	Q2 Total	JUL	AUG	SEP	Q3 Total	OCT	NOV	DEC	Q4 Total					
Atherton	-	-	-	-	-	-	-	-	-	-	-	-	-	-	-	-	-	5	(5)	\$ 150	\$ -
Belmont	-	-	-	-	-	-	-	-	-	-	-	-	-	-	-	-	-	5	(5)	\$ 150	\$ -
Burlingame	-	-	-	-	-	-	-	-	-	-	-	-	-	-	-	-	-	5	(5)	\$ 150	\$ -
East Palo Alto	-	-	-	-	-	-	-	-	-	-	-	-	-	-	-	-	-	5	(5)	\$ 150	\$ -
Fair Oaks/SMCo	-	-	-	-	-	-	-	-	-	-	-	-	-	-	-	-	-	5	(5)	\$ 150	\$ -
Foster City	-	-	-	-	-	-	-	-	-	-	-	-	-	-	-	-	-	5	(5)	\$ 150	\$ -
Hillsborough	-	-	-	-	-	-	-	-	-	-	-	-	-	-	-	-	-	5	(5)	\$ 150	\$ -
Menlo Park	-	-	-	-	-	-	-	-	-	-	-	-	-	-	-	-	-	5	(5)	\$ 150	\$ -
Redwood City	-	-	-	-	-	-	-	-	-	-	-	-	-	-	-	-	-	5	(5)	\$ 150	\$ -
San Carlos	-	-	-	-	-	-	-	-	-	-	-	-	-	-	-	-	-	5	(5)	\$ 150	\$ -
San Mateo	-	-	-	-	-	-	-	-	-	-	-	-	-	-	-	-	-	5	(5)	\$ 150	\$ -
West Bay	-	-	-	-	-	-	-	-	-	-	-	-	-	-	-	-	-	5	(5)	\$ 150	\$ -
	-	-	-	-	-	-	-	-	-	-	-	-	-	-	-	-	-	60	(60)		\$ -

11.03, B.1b. Missed Pickup Not Corrected in 24 Hours

													Less:				2010 Total	Annual Allowance	Net # of Incidents	LD per Incident	Total LD	
	JAN	FEB	MAR	Q1 Total	APR	MAY	JUN	Q2 Total	JUL	AUG	SEP	Q3 Total	OCT	NOV	DEC	Q4 Total						
Atherton	-	-	-	-	-	-	-	-	-	-	-	-	-	-	-	-	-	15	(15)	\$ 150	\$ -	
Belmont	-	1	-	1	-	-	-	-	-	-	-	-	-	-	-	-	-	15	(14)	\$ 150	\$ -	
Burlingame	-	1	-	1	-	-	-	-	-	-	-	-	-	-	-	-	-	15	(14)	\$ 150	\$ -	
East Palo Alto	-	-	-	-	-	-	-	-	-	-	-	-	-	-	-	-	-	15	(15)	\$ 150	\$ -	
Fair Oaks/SMCo	-	-	-	-	-	-	-	-	-	-	-	-	-	-	-	-	-	15	(15)	\$ 150	\$ -	
Foster City	-	-	-	-	-	-	-	-	-	-	-	-	-	-	-	-	-	15	(15)	\$ 150	\$ -	
Hillsborough	-	-	-	-	-	-	-	-	-	-	-	-	-	-	-	-	-	15	(15)	\$ 150	\$ -	
Menlo Park	-	-	-	-	-	-	-	-	-	-	-	-	-	-	-	-	-	15	(15)	\$ 150	\$ -	
Redwood City	-	-	-	-	1	-	2	3	-	-	-	-	-	-	-	-	-	3	15	(12)	\$ 150	\$ -
San Carlos	-	-	-	-	-	-	-	-	-	-	-	-	-	-	-	-	-	15	(15)	\$ 150	\$ -	
San Mateo	-	-	-	-	-	-	-	-	-	-	-	-	-	-	-	-	-	15	(15)	\$ 150	\$ -	
West Bay	-	-	-	-	-	-	-	-	-	-	-	-	-	-	-	-	-	15	(15)	\$ 150	\$ -	
	-	2	-	2	1	-	2	3	-	-	-	-	-	-	-	-	-	5	180	(175)	\$ -	

11.03, B.1c. Consecutive Missed Pickups

													Less:				2010 Total	Annual Allowance	Net # of Incidents	LD per Incident	Total LD
	JAN	FEB	MAR	Q1 Total	APR	MAY	JUN	Q2 Total	JUL	AUG	SEP	Q3 Total	OCT	NOV	DEC	Q4 Total					
Atherton	-	-	-	-	-	-	-	-	-	-	-	-	-	-	-	-	-	0	-	\$ 150	\$ -
Belmont	-	-	-	-	-	-	-	-	-	-	-	-	-	-	-	-	-	0	-	\$ 150	\$ -
Burlingame	-	-	-	-	-	-	-	-	-	-	-	-	-	-	-	-	-	0	-	\$ 150	\$ -
East Palo Alto	-	-	-	-	-	-	-	-	-	-	-	-	-	-	-	-	-	0	-	\$ 150	\$ -
Fair Oaks/SMCo	-	-	-	-	-	-	-	-	-	-	-	-	-	-	-	-	-	0	-	\$ 150	\$ -
Foster City	-	-	-	-	-	-	-	-	-	-	-	-	-	-	-	-	-	0	-	\$ 150	\$ -
Hillsborough	-	-	-	-	-	-	-	-	-	-	-	-	-	-	-	-	-	0	-	\$ 150	\$ -
Menlo Park	-	-	-	-	-	-	-	-	-	-	-	-	-	-	-	-	-	0	-	\$ 150	\$ -
Redwood City	-	-	-	-	-	-	-	-	-	-	-	-	-	-	-	-	-	0	-	\$ 150	\$ -
San Carlos	-	-	-	-	-	-	-	-	-	-	-	-	-	-	-	-	-	0	-	\$ 150	\$ -
San Mateo	-	-	-	-	-	-	-	-	-	-	-	-	-	-	-	-	-	0	-	\$ 150	\$ -
West Bay	-	-	-	-	-	-	-	-	-	-	-	-	-	-	-	-	-	0	-	\$ 150	\$ -
	-	-	-	-	-	-	-	-	-	-	-	-	-	-	-	-	-	0	-		\$ -

2010 LIQUIDATED DAMAGES



11.03, B.1d. Failure to properly conduct special collections

	JAN	FEB	MAR	Q1			APR	MAY	JUN	Q2			JUL	AUG	SEP	Q3			OCT	NOV	DEC	Q4			2010 Total	Less:			Total LD
				Total	Total	Total				Total	Total	Total				Total	2010 Annual Allowance	Net # of Incidents				LD per Incident							
Atherton	-	-	-	-	-	-	-	-	-	-	-	-	-	-	-	-	-	-	-	-	-	-	-	-	0		\$ 250	\$ -	
Belmont	-	-	-	-	-	-	-	-	-	-	-	-	-	-	-	-	-	-	-	-	-	-	-	-	0		\$ 250	\$ -	
Burlingame	-	-	-	-	-	-	-	-	-	-	-	-	-	-	-	-	-	-	-	-	-	-	-	-	0		\$ 250	\$ -	
East Palo Alto	-	-	-	-	-	-	-	-	-	-	-	-	-	-	-	-	-	-	-	-	-	-	-	-	0		\$ 250	\$ -	
Fair Oaks/SMCo	-	-	-	-	-	-	-	-	-	-	-	-	-	-	-	-	-	-	-	-	-	-	-	-	0		\$ 250	\$ -	
Foster City	-	-	-	-	-	-	-	-	-	-	-	-	-	-	-	-	-	-	-	-	-	-	-	-	0		\$ 250	\$ -	
Hillsborough	-	-	-	-	-	-	-	-	-	-	-	-	-	-	-	-	-	-	-	-	-	-	-	-	0		\$ 250	\$ -	
Menlo Park	-	-	-	-	-	-	-	-	-	-	-	-	-	-	-	-	-	-	-	-	-	-	-	-	0		\$ 250	\$ -	
Redwood City	-	-	-	-	-	-	-	-	-	-	-	-	-	-	-	-	-	-	-	-	-	-	-	-	0		\$ 250	\$ -	
San Carlos	-	-	-	-	-	-	-	-	-	-	-	-	-	-	-	-	-	-	-	-	-	-	-	-	0		\$ 250	\$ -	
San Mateo	-	-	-	-	-	-	-	-	-	-	-	-	-	-	-	-	-	-	-	-	-	-	-	-	0		\$ 250	\$ -	
West Bay	-	-	-	-	-	-	-	-	-	-	-	-	-	-	-	-	-	-	-	-	-	-	-	-	0		\$ 250	\$ -	
	-	-	-	-	-	-	-	-	-	-	-	-	-	-	-	-	-	-	-	-	-	-	-	-	0			\$ -	\$ -

11.03, B.1e. Failure to perform and submit billing reviews

	JAN	FEB	MAR	Q1			APR	MAY	JUN	Q2			JUL	AUG	SEP	Q3			OCT	NOV	DEC	Q4			2010 Total	Less:			Total LD
				Total	Total	Total				Total	Total	Total				2010 Annual Allowance	Net # of Incidents	LD per Incident											
Atherton	-	-	-	-	-	-	-	-	-	-	-	-	-	-	-	-	-	-	-	-	-	-	-	-	0		\$ 250	\$ -	
Belmont	-	-	-	-	-	-	-	-	-	-	-	-	-	-	-	-	-	-	-	-	-	-	-	-	0		\$ 250	\$ -	
Burlingame	-	-	-	-	-	-	-	-	-	-	-	-	-	-	-	-	-	-	-	-	-	-	-	-	0		\$ 250	\$ -	
East Palo Alto	-	-	-	-	-	-	-	-	-	-	-	-	-	-	-	-	-	-	-	-	-	-	-	-	0		\$ 250	\$ -	
Fair Oaks/SMCo	-	-	-	-	-	-	-	-	-	-	-	-	-	-	-	-	-	-	-	-	-	-	-	-	0		\$ 250	\$ -	
Foster City	-	-	-	-	-	-	-	-	-	-	-	-	-	-	-	-	-	-	-	-	-	-	-	-	0		\$ 250	\$ -	
Hillsborough	-	-	-	-	-	-	-	-	-	-	-	-	-	-	-	-	-	-	-	-	-	-	-	-	0		\$ 250	\$ -	
Menlo Park	-	-	-	-	-	-	-	-	-	-	-	-	-	-	-	-	-	-	-	-	-	-	-	-	0		\$ 250	\$ -	
Redwood City	-	-	-	-	-	-	-	-	-	-	-	-	-	-	-	-	-	-	-	-	-	-	-	-	0		\$ 250	\$ -	
San Carlos	-	-	-	-	-	-	-	-	-	-	-	-	-	-	-	-	-	-	-	-	-	-	-	-	0		\$ 250	\$ -	
San Mateo	-	-	-	-	-	-	-	-	-	-	-	-	-	-	-	-	-	-	-	-	-	-	-	-	0		\$ 250	\$ -	
West Bay	-	-	-	-	-	-	-	-	-	-	-	-	-	-	-	-	-	-	-	-	-	-	-	-	0		\$ 250	\$ -	
	-	-	-	-	-	-	-	-	-	-	-	-	-	-	-	-	-	-	-	-	-	-	-	-	0			\$ -	\$ -

11.03, B.2a. For each occurrence of private property damage

	JAN	FEB	MAR	Q1			APR	MAY	JUN	Q2			JUL	AUG	SEP	Q3			OCT	NOV	DEC	Q4			2010 Total	Less:			Total LD
				Total	Total	Total				Total	Total	Total				2010 Annual Allowance	Net # of Incidents	LD per Incident											
Atherton	-	-	-	-	-	-	-	-	-	-	-	-	-	-	-	-	-	-	-	-	-	-	-	-	7	(7)	\$ 250	\$ -	
Belmont	-	-	-	-	-	-	-	-	-	-	-	-	-	-	-	-	-	-	-	-	-	-	-	-	7	(7)	\$ 250	\$ -	
Burlingame	-	-	-	-	-	-	-	-	-	-	-	-	-	-	-	-	-	-	-	-	-	-	-	-	7	(7)	\$ 250	\$ -	
East Palo Alto	-	-	-	-	-	-	-	-	-	-	-	-	-	-	-	-	-	-	-	-	-	-	-	-	7	(7)	\$ 250	\$ -	
Fair Oaks/SMCo	-	-	-	-	-	-	-	-	-	-	-	-	-	-	-	-	-	-	-	-	-	-	-	-	7	(7)	\$ 250	\$ -	
Foster City	-	-	-	-	-	-	-	-	-	-	-	-	-	-	-	-	-	-	-	-	-	-	-	-	7	(7)	\$ 250	\$ -	
Hillsborough	-	-	1	1	-	-	-	-	-	-	-	-	-	-	-	-	-	-	-	-	-	-	-	1	7	(6)	\$ 250	\$ -	
Menlo Park	1	-	-	1	-	-	-	-	-	-	-	-	-	-	-	-	-	-	-	-	-	-	-	1	7	(6)	\$ 250	\$ -	
Redwood City	1	-	-	1	-	-	-	-	-	-	-	-	-	-	-	-	-	-	-	-	-	-	-	1	7	(6)	\$ 250	\$ -	
San Carlos	-	-	-	-	-	-	1	1	-	-	-	-	-	-	-	-	-	-	-	-	-	-	-	1	7	(6)	\$ 250	\$ -	
San Mateo	-	-	-	-	-	-	-	-	-	-	-	-	-	-	-	-	-	-	-	-	-	-	-	-	7	(7)	\$ 250	\$ -	
West Bay	-	-	-	-	-	-	-	-	-	-	-	-	-	-	-	-	-	-	-	-	-	-	-	-	7	(7)	\$ 250	\$ -	
	2	-	1	3	-	-	1	1	-	-	-	-	-	-	-	-	-	-	-	-	-	-	-	4	84	(80)		\$ -	\$ -

2010 LIQUIDATED DAMAGES



11.03, B.2b. For each occurrence of failure to properly return containers to the appropriate location

	JAN	FEB	MAR	Q1			Q2			Q3			Q4			2010 Total	Less:			Total LD
				Total	APR	MAY	JUN	Total	JUL	AUG	SEP	Total	OCT	NOV	DEC		Total	2010 Annual Allowance	Net # of Incidents	
Atherton	-	1	-	1	-	-	-	-	-	-	-	-	-	-	1	10	(9)	\$ 150	\$ -	
Belmont	-	-	-	-	-	-	2	2	-	-	-	-	-	-	2	10	(8)	\$ 150	\$ -	
Burlingame	2	-	2	4	-	-	-	-	-	-	-	-	-	-	4	10	(6)	\$ 150	\$ -	
East Palo Alto	-	-	-	-	-	-	1	1	-	-	-	-	-	-	1	10	(9)	\$ 150	\$ -	
Fair Oaks/SMCo	-	-	1	1	-	-	-	-	-	-	-	-	-	-	1	10	(9)	\$ 150	\$ -	
Foster City	-	-	-	-	-	2	-	2	-	-	-	-	-	-	2	10	(8)	\$ 150	\$ -	
Hillsborough	1	-	1	2	-	-	-	-	-	-	-	-	-	-	2	10	(8)	\$ 150	\$ -	
Menlo Park	-	1	-	1	3	-	-	3	-	-	-	-	-	-	4	10	(6)	\$ 150	\$ -	
Redwood City	-	2	3	5	5	1	2	8	-	-	-	-	-	-	13	10	3	\$ 150	\$ 450	
San Carlos	-	1	1	2	2	-	-	2	-	-	-	-	-	-	4	10	(6)	\$ 150	\$ -	
San Mateo	-	-	-	-	1	3	4	8	-	-	-	-	-	-	8	10	(2)	\$ 150	\$ -	
West Bay	-	-	-	-	-	-	-	-	-	-	-	-	-	-	-	10	(10)	\$ 150	\$ -	
Total	3	5	8	16	11	6	9	26	-	-	-	-	-	-	42	120	(78)		\$ 450	

11.03, B.2c. For each occurrence of excessive noise or discourteous behavior

	JAN	FEB	MAR	Q1			Q2			Q3			Q4			2010 Total	Less:			Total LD
				Total	APR	MAY	JUN	Total	JUL	AUG	SEP	Total	OCT	NOV	DEC		Total	2010 Annual Allowance	Net # of Incidents	
Atherton	-	-	-	-	-	1	-	1	-	-	-	-	-	-	1	0	1	\$ 250	\$ 250	
Belmont	-	-	-	-	-	-	-	-	-	-	-	-	-	-	-	0	-	\$ 250	\$ -	
Burlingame	-	-	-	-	-	-	-	-	-	-	-	-	-	-	-	0	-	\$ 250	\$ -	
East Palo Alto	-	-	-	-	-	-	-	-	-	-	-	-	-	-	-	0	-	\$ 250	\$ -	
Fair Oaks/SMCo	-	-	-	-	-	-	-	-	-	-	-	-	-	-	-	0	-	\$ 250	\$ -	
Foster City	-	-	-	-	-	-	-	-	-	-	-	-	-	-	-	0	-	\$ 250	\$ -	
Hillsborough	-	-	-	-	1	-	-	1	-	-	-	-	-	-	1	0	1	\$ 250	\$ 250	
Menlo Park	-	-	-	-	-	-	-	-	-	-	-	-	-	-	-	0	-	\$ 250	\$ -	
Redwood City	1	-	-	1	1	-	2	3	-	-	-	-	-	-	4	0	4	\$ 250	\$ 1,000	
San Carlos	-	-	-	-	-	-	-	-	-	-	-	-	-	-	-	0	-	\$ 250	\$ -	
San Mateo	1	-	-	1	-	1	1	2	-	-	-	-	-	-	3	0	3	\$ 250	\$ 750	
West Bay	-	-	-	-	-	-	-	-	-	-	-	-	-	-	-	0	-	\$ 250	\$ -	
Total	2	-	-	2	2	2	3	7	-	-	-	-	-	-	9	0	9		\$ 2,250	

11.03, B.2d. For each failure to clean up solid waste spilled by the Contractor

	JAN	FEB	MAR	Q1			Q2			Q3			Q4			2010 Total	Less:			Total LD
				Total	APR	MAY	JUN	Total	JUL	AUG	SEP	Total	OCT	NOV	DEC		Total	2010 Annual Allowance	Net # of Incidents	
Atherton	-	-	-	-	-	-	-	-	-	-	-	-	-	-	-	15	(15)	\$ 150	\$ -	
Belmont	-	2	1	3	-	1	-	1	-	-	-	-	-	-	4	15	(11)	\$ 150	\$ -	
Burlingame	-	-	2	2	-	-	1	1	-	-	-	-	-	-	3	15	(12)	\$ 150	\$ -	
East Palo Alto	1	-	-	1	-	-	-	-	-	-	-	-	-	-	1	15	(14)	\$ 150	\$ -	
Fair Oaks/SMCo	-	-	-	-	-	-	-	-	-	-	-	-	-	-	-	15	(15)	\$ 150	\$ -	
Foster City	1	1	-	2	1	1	-	2	-	-	-	-	-	-	4	15	(11)	\$ 150	\$ -	
Hillsborough	-	-	-	-	-	1	-	1	-	-	-	-	-	-	1	15	(14)	\$ 150	\$ -	
Menlo Park	-	-	-	-	-	-	-	-	-	-	-	-	-	-	-	15	(15)	\$ 150	\$ -	
Redwood City	3	1	4	8	1	-	1	2	-	-	-	-	-	-	10	15	(5)	\$ 150	\$ -	
San Carlos	-	2	-	2	-	1	1	2	-	-	-	-	-	-	4	15	(11)	\$ 150	\$ -	
San Mateo	-	-	1	1	-	-	-	-	-	-	-	-	-	-	1	15	(14)	\$ 150	\$ -	
West Bay	-	-	-	-	-	-	-	-	-	-	-	-	-	-	-	15	(15)	\$ 150	\$ -	
Total	5	6	8	19	2	4	3	9	-	-	-	-	-	-	28	180	(152)		\$ -	

2010 LIQUIDATED DAMAGES



11.03, B.2e. For each occurrence of collection of solid waste materials during unauthorized hours

	JAN	FEB	MAR	Q1			Q2			Q3			Q4			2010 Total	Less:			Total LD
				Total	APR	MAY	JUN	Total	JUL	AUG	SEP	Total	OCT	NOV	DEC		Total	Annual Allowance	Net # of Incidents	
Atherton	-	-	-	-	-	-	-	-	-	-	-	-	-	-	-	-	10	(10)	\$ 250	\$ -
Belmont	-	-	-	-	-	-	-	-	-	-	-	-	-	-	-	-	10	(10)	\$ 250	\$ -
Burlingame	-	-	-	-	-	-	-	-	-	-	-	-	-	-	-	-	10	(10)	\$ 250	\$ -
East Palo Alto	-	-	-	-	-	-	-	-	-	-	-	-	-	-	-	-	10	(10)	\$ 250	\$ -
Fair Oaks/SMCo	-	-	-	-	-	-	-	-	-	-	-	-	-	-	-	-	10	(10)	\$ 250	\$ -
Foster City	-	-	-	-	1	-	-	1	-	-	-	-	-	-	-	1	10	(9)	\$ 250	\$ -
Hillsborough	-	-	-	-	-	-	-	-	-	-	-	-	-	-	-	-	10	(10)	\$ 250	\$ -
Menlo Park	-	-	-	-	-	-	-	-	-	-	-	-	-	-	-	-	10	(10)	\$ 250	\$ -
Redwood City	-	-	-	-	-	-	-	-	-	-	-	-	-	-	-	-	10	(10)	\$ 250	\$ -
San Carlos	-	-	1	1	-	-	-	-	-	-	-	-	-	-	-	1	10	(9)	\$ 250	\$ -
San Mateo	-	-	-	-	-	-	-	-	-	-	-	-	-	-	-	-	10	(10)	\$ 250	\$ -
West Bay	-	-	-	-	-	-	-	-	-	-	-	-	-	-	-	-	10	(10)	\$ 250	\$ -
Total	-	-	1	1	1	-	-	1	-	-	-	-	-	-	-	2	120	(118)		\$ -

11.03, B.3a. For each failure to initially respond to a service recipient complaint within one business day

	JAN	FEB	MAR	Q1			Q2			Q3			Q4			2010 Total	Less:			Total LD
				Total	APR	MAY	JUN	Total	JUL	AUG	SEP	Total	OCT	NOV	DEC		Total	Annual Allowance	Net # of Incidents	
Atherton	-	-	-	-	-	-	-	-	-	-	-	-	-	-	-	-	0	-	\$ 100	\$ -
Belmont	-	-	-	-	-	-	-	-	-	-	-	-	-	-	-	-	0	-	\$ 100	\$ -
Burlingame	-	-	-	-	-	-	-	-	-	-	-	-	-	-	-	-	0	-	\$ 100	\$ -
East Palo Alto	-	-	-	-	-	-	-	-	-	-	-	-	-	-	-	-	0	-	\$ 100	\$ -
Fair Oaks/SMCo	-	-	-	-	-	-	-	-	-	-	-	-	-	-	-	-	0	-	\$ 100	\$ -
Foster City	-	-	-	-	-	-	-	-	-	-	-	-	-	-	-	-	0	-	\$ 100	\$ -
Hillsborough	-	-	-	-	-	-	-	-	-	-	-	-	-	-	-	-	0	-	\$ 100	\$ -
Menlo Park	-	-	-	-	-	-	-	-	-	-	-	-	-	-	-	-	0	-	\$ 100	\$ -
Redwood City	-	-	-	-	-	-	-	-	-	-	-	-	-	-	-	-	0	-	\$ 100	\$ -
San Carlos	-	-	-	-	-	-	-	-	-	-	-	-	-	-	-	-	0	-	\$ 100	\$ -
San Mateo	-	-	-	-	-	-	-	-	-	-	-	-	-	-	-	-	0	-	\$ 100	\$ -
West Bay	-	-	-	-	-	-	-	-	-	-	-	-	-	-	-	-	0	-	\$ 100	\$ -
Total	-	-	-	-	-	-	-	-	-	-	-	-	-	-	-	-	0	-	\$ -	\$ -

11.03, B.3b. For each failure to process service recipient complaints to Agency

	JAN	FEB	MAR	Q1			Q2			Q3			Q4			2010 Total	Less:			Total LD
				Total	APR	MAY	JUN	Total	JUL	AUG	SEP	Total	OCT	NOV	DEC		Total	Annual Allowance	Net # of Incidents	
Atherton	-	-	-	-	-	-	-	-	-	-	-	-	-	-	-	-	0		\$ 100	\$ -
Belmont	-	-	-	-	-	-	-	-	-	-	-	-	-	-	-	-	0		\$ 100	\$ -
Burlingame	-	-	-	-	-	-	-	-	-	-	-	-	-	-	-	-	0		\$ 100	\$ -
East Palo Alto	-	-	-	-	-	-	-	-	-	-	-	-	-	-	-	-	0		\$ 100	\$ -
Fair Oaks/SMCo	-	-	-	-	-	-	-	-	-	-	-	-	-	-	-	-	0		\$ 100	\$ -
Foster City	-	-	-	-	-	-	-	-	-	-	-	-	-	-	-	-	0		\$ 100	\$ -
Hillsborough	-	-	-	-	-	-	-	-	-	-	-	-	-	-	-	-	0		\$ 100	\$ -
Menlo Park	-	-	-	-	-	-	-	-	-	-	-	-	-	-	-	-	0		\$ 100	\$ -
Redwood City	-	-	-	-	-	-	-	-	-	-	-	-	-	-	-	-	0		\$ 100	\$ -
San Carlos	-	-	-	-	-	-	-	-	-	-	-	-	-	-	-	-	0		\$ 100	\$ -
San Mateo	-	-	-	-	-	-	-	-	-	-	-	-	-	-	-	-	0		\$ 100	\$ -
West Bay	-	-	-	-	-	-	-	-	-	-	-	-	-	-	-	-	0		\$ 100	\$ -
Total	-	-	-	-	-	-	-	-	-	-	-	-	-	-	-	-	0		\$ -	\$ -

	43	47	-	-	90	\$ 2,700
--	----	----	---	---	----	----------

2010 - Q2 Recyclable Materials Tonnage Revenue Statement 08.15.2010

Material Type	Tons Shipped				Quarterly Revenue				Avg. Revenue per Ton	End Uses
	Apr	May	Jun	Total	Apr	May	Jun	Total		
Aluminum										Aluminum products, cans, etc.
Hardback Books										Recycled paper
Glass										Fiberglass, glass, glassfault
HDPE (Color)										Bottles, bender board
Mixed Paper										Boxboard, liner board
OCC (Cardboard)										Cardboard, box board, liner board
Office Mix										Boxboard, liner board
ONP (Newspaper) #6										Newsprint, boxboard, insulation
ONP (Newspaper) #8										Newsprint, boxboard, insulation
PET										PET, clothing
Tin										Metal products, cans
Totals	-	-	-	-	\$ -	\$-	\$-	\$ -		

Operation Discontinued

SOLID WASTE GENERATION IN TONS BY JURISDICTION & TYPE

Period: APR 1 - JUN 30, 2010

JURISDICTION/TYPE	CURRENT QUARTER			1ST QTR	2ND QTR	3RD QTR	4TH QTR	2010 TOTAL
	APR	MAY	JUN					
Atherton								
Commercial								
Commercial Waste	63	62	65	191	190			381
Roll-off (Franchised) Waste Transfer Station	6	0	8	21	15			35
Commercial Recycling	8	8	9	25	25			50
Commercial Organics	26	24	22	66	72			138
Commercial Other Diversion	20	6	44	38	70			107
SUBTOTAL - Disposed	69	63	73	212	204			416
SUBTOTAL - Diverted	54	37	76	129	167			296
Residential								
Residential Waste	169	171	195	540	535			1,075
Residential Cleanup	3	7	7	12	17			29
Residential Curbside Recycling	85	82	93	276	260			537
Residential Curbside Plant Materials	454	431	453	1,279	1,337			2,617
SUBTOTAL - Disposed	172	178	202	552	553			1,104
SUBTOTAL - Diverted	540	513	546	1,555	1,598			3,153
San Carlos Transfer Station								
Self-Haul Transfer Station	26	6	20	86	53			138
JPA City Vehicles Transfer Station	0	0	0	0	0			0
Roll-off (Non-Franchised) Waste Transfer Station	7	0	2	17	9			26
Commercial Other	0	0	0	0	0			0
Transfer Station Diversion	67	139	101	273	307			580
JPA Diversion	0	0	0	0	0			0
Self-Haul Plant Materials	16	33	28	87	77			164
SUBTOTAL - Disposed	33	6	22	103	61			164
SUBTOTAL - Diverted	83	171	129	360	384			744
COMMERCIAL RECYCLING RATE	43.9%	37.4%	50.9%	37.8%	45.0%			41.5%
RES'L YARDWASTE & RECYCLING RATE	75.8%	74.2%	73.0%	73.8%	74.3%			74.1%
TRANSFER STATION DIVERSION RATE	71.5%	96.4%	85.6%	77.7%	86.2%			81.9%
TOTAL DISPOSED	274	247	297	867	818			1,685
TOTAL DIVERTED	676	722	751	2,044	2,149			4,193
TOTAL DIVERSION RATE	71.2%	74.5%	71.6%	70.2%	72.4%			71.3%

CUMULATIVE ANNUAL COMPARISON OF SOLID WASTE GENERATION

Period: APR 1 - JUN 30, 2010

<u>JURISDICTION/TYPE</u>	<u>Year to Date 2005 Tons</u>	<u>Year to Date 2006 Tons</u>	<u>Year to Date 2007 Tons</u>	<u>Year to Date 2008 Tons</u>	<u>Year to Date 2009 Tons</u>	<u>Year to Date 2010 Tons</u>	<u>'09/'10 Tons Inc/(Dec)</u>	<u>'09/'10 % Change</u>
Atherton								
Commercial								
Commercial Waste	425	385	357	407	366	381	15	4.0%
Roll-off (Franchised) Waste Transfer Station	0	45	16	41	25	35	11	44.3%
Commercial Recycling	69	59	82	70	70	50	(20)	-28.2%
Commercial Organics	215	245	167	129	119	138	18	15.4%
Commercial Other Diversion	91	113	61	141	95	107	13	13.7%
SUBTOTAL - Disposed	425	430	373	448	391	416	25	6.5%
SUBTOTAL - Diverted	375	417	310	341	284	296	12	4.1%
Residential								
Residential Waste	1,271	1,170	1,104	1,134	1,050	1,075	25	2.3%
Residential Cleanup	22	14	17	17	29	29	1	2.1%
Residential Curbside Recycling	658	640	734	679	564	537	(27)	-4.9%
Residential Curbside Plant Materials	2,535	2,305	2,080	2,355	2,410	2,617	206	8.6%
SUBTOTAL - Disposed	1,293	1,184	1,121	1,150	1,079	1,104	25	2.3%
SUBTOTAL - Diverted	3,193	2,945	2,814	3,034	2,974	3,153	179	6.0%
San Carlos Transfer Station								
Self-Haul Transfer Station	454	419	443	375	331	138	(193)	-58.2%
JPA City Vehicles Transfer Station	0	0	0	0	0	0	0	0.0%
Roll-off (Non-Franchised) Waste Transfer Station	172	83	17	4	12	26	14	123.5%
Commercial Other	6	13	17	25	16	0	(16)	-100.0%
Transfer Station Diversion	192	236	401	438	536	580	45	8.3%
JPA Diversion	0	0	0	0	0	0	0	0.0%
Self-Haul Plant Materials	178	86	169	178	122	164	42	34.3%
SUBTOTAL - Disposed	632	515	477	404	359	164	(194)	-54.2%
SUBTOTAL - Diverted	370	322	570	616	657	744	86	13.1%
COMMERCIAL RECYCLING RATE	46.9%	49.3%	45.4%	43.2%	42.1%	41.5%		
RES'L YARDWASTE & RECYCLING RATE	71.2%	71.3%	71.5%	72.5%	73.4%	74.1%		
TRANSFER STATION DIVERSION RATE	36.9%	38.5%	54.5%	60.4%	64.7%	81.9%		
TOTAL DISPOSED	2,350	2,129	1,971	2,002	1,829	1,685		
TOTAL DIVERTED	3,938	3,684	3,694	3,991	3,916	4,193		
TOTAL DIVERSION RATE	62.6%	63.4%	65.2%	66.6%	68.2%	71.3%		

SOLID WASTE GENERATION IN TONS BY JURISDICTION & TYPE

Period: APR 1 - JUN 30, 2010

JURISDICTION/TYPE	CURRENT QUARTER			1ST QTR	2ND QTR	3RD QTR	4TH QTR	2010 TOTAL
	APR	MAY	JUN					
Belmont								
Commercial								
Commercial Waste	460	446	458	1,389	1,364			2,753
Roll-off (Franchised) Waste Transfer Station	127	89	108	263	324			587
Commercial Recycling	94	89	91	266	274			540
Commercial Organics	32	35	33	115	100			215
Commercial Other Diversion	88	0	1	1	89			90
SUBTOTAL - Disposed	587	535	566	1,651	1,688			3,340
SUBTOTAL - Diverted	214	124	125	382	463			845
Residential								
Residential Waste	348	340	361	1,060	1,049			2,108
Residential Cleanup	19	27	28	48	75			122
Residential Curbside Recycling	206	170	180	622	556			1,178
Residential Curbside Plant Materials	330	281	285	787	897			1,684
SUBTOTAL - Disposed	367	367	389	1,107	1,123			2,230
SUBTOTAL - Diverted	536	451	465	1,410	1,452			2,862
San Carlos Transfer Station								
Self-Haul Transfer Station	118	28	87	418	233			651
JPA City Vehicles Transfer Station	78	58	54	164	190			354
Roll-off (Non-Franchised) Waste Transfer Station	3	1	7	9	12			20
Commercial Other	0	0	0	0	0			0
Transfer Station Diversion	179	159	176	532	514			1,046
JPA Diversion	43	16	88	106	147			253
Self-Haul Plant Materials	17	57	33	111	106			217
SUBTOTAL - Disposed	199	88	148	590	435			1,025
SUBTOTAL - Diverted	239	233	296	749	767			1,517
COMMERCIAL RECYCLING RATE	26.7%	18.8%	18.1%	18.8%	21.5%			20.2%
RES'L YARDWASTE & RECYCLING RATE	59.4%	55.2%	54.4%	56.0%	56.4%			56.2%
TRANSFER STATION DIVERSION RATE	54.5%	72.7%	66.6%	55.9%	63.8%			59.7%
TOTAL DISPOSED	1,153	989	1,104	3,349	3,247			6,596
TOTAL DIVERTED	989	807	886	2,541	2,682			5,224
TOTAL DIVERSION RATE	46.2%	44.9%	44.5%	43.1%	45.2%			44.2%

CUMULATIVE ANNUAL COMPARISON OF SOLID WASTE GENERATION

Period: APR 1 - JUN 30, 2010

JURISDICTION/TYPE	Year to Date 2005 Tons	Year to Date 2006 Tons	Year to Date 2007 Tons	Year to Date 2008 Tons	Year to Date 2009 Tons	Year to Date 2010 Tons	'09/'10 Tons Inc/(Dec)	'09/'10 % Change
Belmont								
Commercial								
Commercial Waste	3,336	3,228	2,951	2,970	2,701	2,753	52	1.9%
Roll-off (Franchised) Waste Transfer Station	368	201	390	393	354	587	233	65.6%
Commercial Recycling	702	575	555	536	638	540	(98)	-15.4%
Commercial Organics	139	254	247	203	215	215	(0)	-0.1%
Commercial Other Diversion	31	60	17	20	14	90	76	531.1%
SUBTOTAL - Disposed	3,704	3,429	3,341	3,364	3,055	3,340	284	9.3%
SUBTOTAL - Diverted	872	888	819	759	868	845	(22)	-2.6%
Residential								
Residential Waste	2,729	2,333	2,221	2,160	1,991	2,108	118	5.9%
Residential Cleanup	103	87	98	87	116	122	6	5.5%
Residential Curbside Recycling	1,337	1,415	1,300	1,278	1,126	1,178	52	4.6%
Residential Curbside Plant Materials	1,329	1,425	1,474	1,510	1,455	1,684	229	15.7%
SUBTOTAL - Disposed	2,831	2,420	2,319	2,247	2,107	2,230	124	5.9%
SUBTOTAL - Diverted	2,665	2,840	2,774	2,789	2,581	2,862	281	10.9%
San Carlos Transfer Station								
Self-Haul Transfer Station	2,043	2,133	1,941	1,609	1,537	651	(886)	-57.7%
JPA City Vehicles Transfer Station	293	388	361	373	406	354	(52)	-12.7%
Roll-off (Non-Franchised) Waste Transfer Station	163	195	9	1	31	20	(10)	-33.0%
Commercial Other	25	56	71	51	55	0	(55)	-100.0%
Transfer Station Diversion	1,018	873	946	929	884	1,046	162	18.4%
JPA Diversion	617	804	505	449	392	253	(140)	-35.6%
Self-Haul Plant Materials	330	241	302	322	168	217	49	29.3%
SUBTOTAL - Disposed	2,524	2,771	2,382	2,034	2,028	1,025	(1,003)	-49.4%
SUBTOTAL - Diverted	1,964	1,917	1,753	1,700	1,445	1,517	72	5.0%
COMMERCIAL RECYCLING RATE	19.0%	20.6%	19.7%	18.4%	22.1%	20.2%		
RES'L YARDWASTE & RECYCLING RATE	48.5%	54.0%	54.5%	55.4%	55.1%	56.2%		
TRANSFER STATION DIVERSION RATE	43.8%	40.9%	42.4%	45.5%	41.6%	59.7%		
TOTAL DISPOSED	9,060	8,620	8,043	7,645	7,190	6,596		
TOTAL DIVERTED	5,501	5,646	5,346	5,248	4,893	5,224		
TOTAL DIVERSION RATE	37.8%	39.6%	39.9%	40.7%	40.5%	44.2%		

SOLID WASTE GENERATION IN TONS BY JURISDICTION & TYPE

Period: APR 1 - JUN 30, 2010

JURISDICTION/TYPE	CURRENT QUARTER			1ST QTR	2ND QTR	3RD QTR	4TH QTR	2010 TOTAL
	APR	MAY	JUN					
Burlingame								
Commercial								
Commercial Waste	1,038	992	1,034	3,083	3,064			6,147
Roll-off (Franchised) Waste Transfer Station	694	714	742	1,962	2,150			4,112
Commercial Recycling	268	259	275	833	802			1,635
Commercial Organics	101	111	105	331	318			648
Commercial Other Diversion	66	43	57	227	166			392
SUBTOTAL - Disposed	1,732	1,706	1,776	5,046	5,213			10,259
SUBTOTAL - Diverted	435	412	438	1,390	1,285			2,676
Residential								
Residential Waste	365	364	379	1,119	1,108			2,227
Residential Cleanup	23	26	28	44	78			121
Residential Curbside Recycling	222	206	225	632	653			1,285
Residential Curbside Plant Materials	311	301	307	782	919			1,701
SUBTOTAL - Disposed	388	390	407	1,162	1,186			2,348
SUBTOTAL - Diverted	533	507	532	1,414	1,572			2,986
San Carlos Transfer Station								
Self-Haul Transfer Station	37	18	46	169	101			269
JPA City Vehicles Transfer Station	0	0	0	0	0			0
Roll-off (Non-Franchised) Waste Transfer Station	28	24	7	84	59			143
Commercial Other	0	0	0	0	0			0
Transfer Station Diversion	93	120	88	239	301			540
JPA Diversion	4	8	0	241	12			254
Self-Haul Plant Materials	6	24	14	28	44			72
SUBTOTAL - Disposed	65	42	53	253	160			412
SUBTOTAL - Diverted	103	153	101	509	358			866
COMMERCIAL RECYCLING RATE	20.1%	19.5%	19.8%	21.6%	19.8%			20.7%
RES'L YARDWASTE & RECYCLING RATE	57.9%	56.5%	56.6%	54.9%	57.0%			56.0%
TRANSFER STATION DIVERSION RATE	61.5%	78.5%	65.5%	66.8%	69.1%			67.7%
TOTAL DISPOSED	2,185	2,138	2,237	6,460	6,559			13,020
TOTAL DIVERTED	1,072	1,073	1,071	3,312	3,215			6,528
TOTAL DIVERSION RATE	32.9%	33.4%	32.4%	33.9%	32.9%			33.4%

CUMULATIVE ANNUAL COMPARISON OF SOLID WASTE GENERATION

Period: APR 1 - JUN 30, 2010

JURISDICTION/TYPE	Year to Date 2005 Tons	Year to Date 2006 Tons	Year to Date 2007 Tons	Year to Date 2008 Tons	Year to Date 2009 Tons	Year to Date 2010 Tons	'09/'10 Tons Inc/(Dec)	'09/'10 % Change
Burlingame								
Commercial								
Commercial Waste	7,762	10,031	7,171	6,970	6,386	6,147	(239)	-3.7%
Roll-off (Franchised) Waste Transfer Station	4,647	1,719	5,036	4,841	3,977	4,112	135	3.4%
Commercial Recycling	2,186	1,660	1,617	1,688	1,550	1,635	85	5.5%
Commercial Organics	213	495	403	450	590	648	58	9.8%
Commercial Other Diversion	304	429	330	284	406	392	(14)	-3.5%
SUBTOTAL - Disposed	12,408	11,751	12,206	11,812	10,362	10,259	(103)	-1.0%
SUBTOTAL - Diverted	2,703	2,584	2,350	2,422	2,546	2,676	129	5.1%
Residential								
Residential Waste	2,523	2,468	2,379	2,344	2,236	2,227	(9)	-0.4%
Residential Cleanup	100	96	100	106	114	121	8	6.7%
Residential Curbside Recycling	1,562	1,443	1,419	1,394	1,204	1,285	81	6.7%
Residential Curbside Plant Materials	1,695	1,616	1,426	1,592	1,525	1,701	176	11.5%
SUBTOTAL - Disposed	2,623	2,564	2,479	2,450	2,350	2,348	(2)	-0.1%
SUBTOTAL - Diverted	3,256	3,059	2,845	2,986	2,729	2,986	257	9.4%
San Carlos Transfer Station								
Self-Haul Transfer Station	1,080	1,066	980	661	559	269	(290)	-51.9%
JPA City Vehicles Transfer Station	24	28	6	22	5	0	(5)	-100.0%
Roll-off (Non-Franchised) Waste Transfer Station	390	342	113	101	181	143	(38)	-21.1%
Commercial Other	81	163	221	149	155	0	(155)	-100.0%
Transfer Station Diversion	754	629	615	915	361	540	179	49.5%
JPA Diversion	266	283	317	613	421	254	(167)	-39.8%
Self-Haul Plant Materials	157	89	108	113	56	72	17	29.8%
SUBTOTAL - Disposed	1,575	1,600	1,321	932	902	412	(489)	-54.3%
SUBTOTAL - Diverted	1,177	1,001	1,039	1,641	838	866	28	3.3%
COMMERCIAL RECYCLING RATE	17.9%	18.0%	16.1%	17.0%	19.7%	20.7%		
RES'L YARDWASTE & RECYCLING RATE	55.4%	54.4%	53.4%	54.9%	53.7%	56.0%		
TRANSFER STATION DIVERSION RATE	42.8%	38.5%	44.0%	63.8%	48.2%	67.7%		
TOTAL DISPOSED	16,606	15,915	16,006	15,194	13,614	13,020		
TOTAL DIVERTED	7,136	6,644	6,234	7,050	6,113	6,528		
TOTAL DIVERSION RATE	30.1%	29.5%	28.0%	31.7%	31.0%	33.4%		

SOLID WASTE GENERATION IN TONS BY JURISDICTION & TYPE

Period: APR 1 - JUN 30, 2010

JURISDICTION/TYPE	CURRENT QUARTER			1ST QTR	2ND QTR	3RD QTR	4TH QTR	2010 TOTAL
	APR	MAY	JUN					
East Palo Alto								
Commercial								
Commercial Waste	368	402	415	1,165	1,185			2,349
Roll-off (Franchised) Waste Transfer Station	139	100	110	298	348			646
Commercial Recycling	40	34	38	111	112			223
Commercial Organics	12	11	10	30	33			63
Commercial Other Diversion	30	37	26	78	93			171
SUBTOTAL - Disposed	507	502	524	1,463	1,533			2,996
SUBTOTAL - Diverted	82	82	74	219	238			457
Residential								
Residential Waste	564	567	624	1,789	1,754			3,543
Residential Cleanup	11	13	11	21	35			56
Residential Curbside Recycling	53	52	55	189	161			350
Residential Curbside Plant Materials	288	272	259	698	819			1,517
SUBTOTAL - Disposed	575	580	634	1,810	1,790			3,599
SUBTOTAL - Diverted	341	325	314	887	981			1,867
San Carlos Transfer Station								
Self-Haul Transfer Station	23	10	25	95	58			153
JPA City Vehicles Transfer Station	0	0	0	0	0			0
Roll-off (Non-Franchised) Waste Transfer Station	10	8	14	67	31			99
Commercial Other	41	38	36	101	115			216
Transfer Station Diversion	13	28	36	82	77			160
JPA Diversion	0	0	0	0	0			0
Self-Haul Plant Materials	4	16	10	30	30			60
SUBTOTAL - Disposed	73	56	74	264	204			468
SUBTOTAL - Diverted	17	44	46	113	107			220
COMMERCIAL RECYCLING RATE	13.9%	14.1%	12.3%	13.0%	13.4%			13.2%
RES'L YARDWASTE & RECYCLING RATE	37.3%	35.9%	33.1%	32.9%	35.4%			34.2%
TRANSFER STATION DIVERSION RATE	18.8%	43.7%	38.3%	29.9%	34.3%			31.9%
TOTAL DISPOSED	1,155	1,138	1,233	3,537	3,527			7,063
TOTAL DIVERTED	440	451	434	1,219	1,325			2,545
TOTAL DIVERSION RATE	27.6%	28.4%	26.0%	25.6%	27.3%			26.5%

CUMULATIVE ANNUAL COMPARISON OF SOLID WASTE GENERATION

Period: APR 1 - JUN 30, 2010

JURISDICTION/TYPE	Year to Date 2005 Tons	Year to Date 2006 Tons	Year to Date 2007 Tons	Year to Date 2008 Tons	Year to Date 2009 Tons	Year to Date 2010 Tons	'09/'10 Tons Inc/(Dec)	'09/'10 % Change
East Palo Alto								
Commercial								
Commercial Waste	2,533	2,615	2,502	2,487	2,417	2,349	(68)	-2.8%
Roll-off (Franchised) Waste Transfer Station	644	291	339	315	544	646	102	18.7%
Commercial Recycling	323	277	273	249	251	223	(27)	-10.9%
Commercial Organics	51	76	66	63	59	63	5	8.0%
Commercial Other Diversion	110	97	104	104	114	171	57	49.9%
SUBTOTAL - Disposed	3,177	2,906	2,840	2,802	2,962	2,996	34	1.1%
SUBTOTAL - Diverted	484	450	443	416	423	457	34	8.1%
Residential								
Residential Waste	3,798	3,346	3,423	3,432	3,331	3,543	213	6.4%
Residential Cleanup	76	267	70	56	64	56	(7)	-11.7%
Residential Curbside Recycling	250	304	392	404	360	350	(10)	-2.8%
Residential Curbside Plant Materials	1,164	1,133	1,211	1,352	1,333	1,517	184	13.8%
SUBTOTAL - Disposed	3,874	3,613	3,494	3,489	3,394	3,599	205	6.0%
SUBTOTAL - Diverted	1,414	1,437	1,603	1,756	1,693	1,867	174	10.3%
San Carlos Transfer Station								
Self-Haul Transfer Station	646	512	460	288	387	153	(234)	-60.4%
JPA City Vehicles Transfer Station	0	0	0	0	0	0	0	0.0%
Roll-off (Non-Franchised) Waste Transfer Station	390	671	455	382	170	99	(72)	-42.2%
Commercial Other	306	337	313	264	298	216	(81)	-27.2%
Transfer Station Diversion	133	57	56	73	102	160	58	56.4%
JPA Diversion	0	0	0	0	0	0	0	0.0%
Self-Haul Plant Materials	104	78	58	54	57	60	3	5.8%
SUBTOTAL - Disposed	1,343	1,520	1,228	933	855	468	(387)	-45.2%
SUBTOTAL - Diverted	237	135	114	127	159	220	61	38.3%
COMMERCIAL RECYCLING RATE	13.2%	13.4%	13.5%	12.9%	12.5%	13.2%		
RES'L YARDWASTE & RECYCLING RATE	26.7%	28.5%	31.4%	33.5%	33.3%	34.2%		
TRANSFER STATION DIVERSION RATE	15.0%	8.2%	8.5%	12.0%	15.7%	31.9%		
TOTAL DISPOSED	8,393	8,039	7,562	7,224	7,211	7,063		
TOTAL DIVERTED	2,136	2,022	2,159	2,300	2,275	2,545		
TOTAL DIVERSION RATE	20.3%	20.1%	22.2%	24.1%	24.0%	26.5%		

SOLID WASTE GENERATION IN TONS BY JURISDICTION & TYPE

Period: APR 1 - JUN 30, 2010

JURISDICTION/TYPE	CURRENT QUARTER			1ST QTR	2ND QTR	3RD QTR	4TH QTR	2010 TOTAL
	APR	MAY	JUN					
Foster City								
Commercial								
Commercial Waste	618	539	548	1,912	1,704			3,616
Roll-off (Franchised) Waste Transfer Station	176	180	170	495	526			1,022
Commercial Recycling	85	81	82	301	248			549
Commercial Organics	171	179	188	352	539			890
Commercial Other Diversion	2	2	5	11	8			20
SUBTOTAL - Disposed	794	719	718	2,407	2,231			4,637
SUBTOTAL - Diverted	258	262	275	664	795			1,459
Residential								
Residential Waste	360	337	385	1,076	1,083			2,158
Residential Cleanup	20	25	26	43	71			114
Residential Curbside Recycling	200	169	195	614	564			1,178
Residential Curbside Plant Materials	199	182	222	461	602			1,064
SUBTOTAL - Disposed	380	363	411	1,119	1,154			2,272
SUBTOTAL - Diverted	399	351	417	1,075	1,166			2,242
San Carlos Transfer Station								
Self-Haul Transfer Station	51	12	34	149	97			246
JPA City Vehicles Transfer Station	3	8	4	8	15			23
Roll-off (Non-Franchised) Waste Transfer Station	12	6	5	44	23			67
Commercial Other	0	0	0	0	0			0
Transfer Station Diversion	118	115	185	288	419			706
JPA Diversion	32	56	9	233	97			330
Self-Haul Plant Materials	7	15	13	35	35			71
SUBTOTAL - Disposed	67	26	42	201	136			337
SUBTOTAL - Diverted	158	186	207	556	551			1,107
COMMERCIAL RECYCLING RATE	24.5%	26.7%	27.7%	21.6%	26.3%			23.9%
RES'L YARDWASTE & RECYCLING RATE	51.2%	49.2%	50.3%	49.0%	50.3%			49.7%
TRANSFER STATION DIVERSION RATE	70.2%	87.6%	83.0%	73.5%	80.2%			76.7%
TOTAL DISPOSED	1,241	1,108	1,171	3,726	3,520			7,246
TOTAL DIVERTED	814	799	899	2,295	2,513			4,808
TOTAL DIVERSION RATE	39.6%	41.9%	43.4%	38.1%	41.7%			39.9%

CUMULATIVE ANNUAL COMPARISON OF SOLID WASTE GENERATION

Period: APR 1 - JUN 30, 2010

JURISDICTION/TYPE	Year to Date 2005 Tons	Year to Date 2006 Tons	Year to Date 2007 Tons	Year to Date 2008 Tons	Year to Date 2009 Tons	Year to Date 2010 Tons	'09/'10 Tons Inc/(Dec)	'09/'10 % Change
Foster City								
Commercial								
Commercial Waste	5,104	4,640	3,950	4,004	3,652	3,616	(36)	-1.0%
Roll-off (Franchised) Waste Transfer Station	1,026	1,036	1,416	1,463	1,447	1,022	(425)	-29.4%
Commercial Recycling	886	764	861	690	763	549	(214)	-28.1%
Commercial Organics	190	635	659	622	652	890	238	36.5%
Commercial Other Diversion	31	28	44	40	38	20	(18)	-48.0%
SUBTOTAL - Disposed	6,130	5,676	5,366	5,467	5,098	4,637	(461)	-9.0%
SUBTOTAL - Diverted	1,106	1,427	1,564	1,352	1,453	1,459	6	0.4%
Residential								
Residential Waste	2,547	2,623	2,426	2,221	2,085	2,158	73	3.5%
Residential Cleanup	78	73	71	82	108	114	6	5.5%
Residential Curbside Recycling	1,300	1,392	1,266	1,336	1,089	1,178	89	8.2%
Residential Curbside Plant Materials	920	903	1,008	935	912	1,064	152	16.6%
SUBTOTAL - Disposed	2,625	2,695	2,497	2,303	2,193	2,272	79	3.6%
SUBTOTAL - Diverted	2,221	2,295	2,274	2,271	2,001	2,242	241	12.0%
San Carlos Transfer Station								
Self-Haul Transfer Station	1,014	993	770	753	613	246	(366)	-59.8%
JPA City Vehicles Transfer Station	163	108	37	24	52	23	(29)	-55.7%
Roll-off (Non-Franchised) Waste Transfer Station	338	251	87	36	73	67	(5)	-7.1%
Commercial Other	88	174	208	149	157	0	(157)	-100.0%
Transfer Station Diversion	433	514	948	878	491	706	215	43.8%
JPA Diversion	284	390	369	201	184	330	147	79.8%
Self-Haul Plant Materials	139	71	96	126	68	71	2	3.3%
SUBTOTAL - Disposed	1,603	1,527	1,103	963	894	337	(558)	-62.4%
SUBTOTAL - Diverted	856	974	1,413	1,204	743	1,107	364	49.0%
COMMERCIAL RECYCLING RATE	15.3%	20.1%	22.6%	19.8%	22.2%	23.9%		
RES'L YARDWASTE & RECYCLING RATE	45.8%	46.0%	47.7%	49.7%	47.7%	49.7%		
TRANSFER STATION DIVERSION RATE	34.8%	38.9%	56.2%	55.6%	45.4%	76.7%		
TOTAL DISPOSED	10,358	9,898	8,966	8,733	8,186	7,246		
TOTAL DIVERTED	4,183	4,696	5,251	4,827	4,197	4,808		
TOTAL DIVERSION RATE	28.8%	32.2%	36.9%	35.6%	33.9%	39.9%		

SOLID WASTE GENERATION IN TONS BY JURISDICTION & TYPE

Period: APR 1 - JUN 30, 2010

JURISDICTION/TYPE	CURRENT QUARTER			1ST QTR	2ND QTR	3RD QTR	4TH QTR	2010 TOTAL
	APR	MAY	JUN					
Hillsborough								
Commercial								
Commercial Waste	33	34	35	103	102			205
Roll-off (Franchised) Waste Transfer Station	17	14	13	46	44			89
Commercial Recycling	7	6	7	20	20			40
Commercial Organics	24	25	26	80	75			156
Commercial Other Diversion	6	13	20	19	39			57
SUBTOTAL - Disposed	50	48	48	148	146			295
SUBTOTAL - Diverted	37	44	52	119	134			253
Residential								
Residential Waste	246	248	277	784	770			1,555
Residential Cleanup	7	12	12	19	31			50
Residential Curbside Recycling	132	119	135	415	386			801
Residential Curbside Plant Materials	239	238	253	678	730			1,408
SUBTOTAL - Disposed	253	259	289	803	801			1,605
SUBTOTAL - Diverted	371	357	388	1,093	1,116			2,209
San Carlos Transfer Station								
Self-Haul Transfer Station	16	4	19	57	40			97
JPA City Vehicles Transfer Station	0	0	0	0	0			0
Roll-off (Non-Franchised) Waste Transfer Station	1	2	0	1	3			3
Commercial Other	0	0	0	0	0			0
Transfer Station Diversion	60	90	157	309	308			616
JPA Diversion	0	0	0	0	0			0
Self-Haul Plant Materials	9	18	12	38	39			78
SUBTOTAL - Disposed	17	6	19	58	42			100
SUBTOTAL - Diverted	69	109	169	347	347			694
COMMERCIAL RECYCLING RATE	42.8%	47.8%	52.1%	44.5%	47.8%			46.2%
RES'L YARDWASTE & RECYCLING RATE	59.4%	57.9%	57.3%	57.6%	58.2%			57.9%
TRANSFER STATION DIVERSION RATE	80.0%	94.7%	90.0%	85.7%	89.2%			87.4%
TOTAL DISPOSED	320	314	356	1,010	990			1,999
TOTAL DIVERTED	477	510	610	1,559	1,597			3,156
TOTAL DIVERSION RATE	59.8%	61.9%	63.2%	60.7%	61.7%			61.2%

CUMULATIVE ANNUAL COMPARISON OF SOLID WASTE GENERATION

Period: APR 1 - JUN 30, 2010

<u>JURISDICTION/TYPE</u>	<u>Year to Date 2005 Tons</u>	<u>Year to Date 2006 Tons</u>	<u>Year to Date 2007 Tons</u>	<u>Year to Date 2008 Tons</u>	<u>Year to Date 2009 Tons</u>	<u>Year to Date 2010 Tons</u>	<u>'09/'10 Tons Inc/(Dec)</u>	<u>'09/'10 % Change</u>
Hillsborough								
Commercial								
Commercial Waste	251	226	220	216	195	205	10	5.2%
Roll-off (Franchised) Waste Transfer Station	4	21	67	76	50	89	39	77.1%
Commercial Recycling	57	44	41	43	55	40	(16)	-28.4%
Commercial Organics	103	119	104	138	158	156	(2)	-1.2%
Commercial Other Diversion	217	131	72	76	64	57	(7)	-10.3%
SUBTOTAL - Disposed	255	246	287	292	246	295	49	20.0%
SUBTOTAL - Diverted	378	295	216	257	277	253	(24)	-8.8%
Residential								
Residential Waste	1,855	1,700	1,671	1,690	1,530	1,555	25	1.7%
Residential Cleanup	47	35	37	44	52	50	(2)	-4.6%
Residential Curbside Recycling	859	912	834	907	800	801	2	0.2%
Residential Curbside Plant Materials	1,347	1,421	1,252	1,382	1,364	1,408	44	3.2%
SUBTOTAL - Disposed	1,902	1,735	1,707	1,734	1,582	1,605	23	1.4%
SUBTOTAL - Diverted	2,206	2,333	2,086	2,289	2,164	2,209	45	2.1%
San Carlos Transfer Station								
Self-Haul Transfer Station	410	342	358	310	240	97	(143)	-59.6%
JPA City Vehicles Transfer Station	0	0	0	0	0	0	0	0.0%
Roll-off (Non-Franchised) Waste Transfer Station	9	11	0	0	3	3	(0)	-2.1%
Commercial Other	2	5	7	5	5	0	(5)	-100.0%
Transfer Station Diversion	279	357	589	579	501	616	116	23.1%
JPA Diversion	0	0	0	0	0	0	0	0.0%
Self-Haul Plant Materials	90	69	137	184	71	78	7	9.5%
SUBTOTAL - Disposed	421	358	365	314	248	100	(148)	-59.6%
SUBTOTAL - Diverted	369	426	725	763	572	694	122	21.4%
COMMERCIAL RECYCLING RATE	59.7%	54.4%	43.0%	46.8%	53.0%	46.2%		
RES'L YARDWASTE & RECYCLING RATE	53.7%	57.4%	55.0%	56.9%	57.8%	57.9%		
TRANSFER STATION DIVERSION RATE	46.7%	54.3%	66.5%	70.8%	69.7%	87.4%		
TOTAL DISPOSED	2,578	2,339	2,359	2,339	2,075	1,999		
TOTAL DIVERTED	2,953	3,054	3,027	3,309	3,012	3,156		
TOTAL DIVERSION RATE	53.4%	56.6%	56.2%	58.6%	59.2%	61.2%		

SOLID WASTE GENERATION IN TONS BY JURISDICTION & TYPE

Period: APR 1 - JUN 30, 2010

JURISDICTION/TYPE	CURRENT QUARTER			1ST QTR	2ND QTR	3RD QTR	4TH QTR	2010 TOTAL
	APR	MAY	JUN					
Menlo Park								
Commercial								
Commercial Waste	1,097	1,073	1,106	3,283	3,276			6,559
Roll-off (Franchised) Waste Transfer Station	41	26	32	117	99			216
Commercial Recycling	271	270	272	889	814			1,703
Commercial Organics	234	219	204	629	657			1,286
Commercial Other Diversion	0	35	57	310	92			402
SUBTOTAL - Disposed	1,138	1,099	1,138	3,400	3,375			6,775
SUBTOTAL - Diverted	505	525	533	1,828	1,563			3,390
Residential								
Residential Waste	457	422	440	1,356	1,319			2,674
Residential Cleanup	20	25	25	43	70			113
Residential Curbside Recycling	257	231	233	732	721			1,453
Residential Curbside Plant Materials	622	539	495	1,575	1,656			3,231
SUBTOTAL - Disposed	477	447	465	1,398	1,389			2,787
SUBTOTAL - Diverted	879	770	728	2,307	2,377			4,684
San Carlos Transfer Station								
Self-Haul Transfer Station	88	28	77	344	193			537
JPA City Vehicles Transfer Station	0	0	0	0	0			0
Roll-off (Non-Franchised) Waste Transfer Station	81	12	33	452	126			578
Commercial Other	0	0	0	0	0			0
Transfer Station Diversion	208	290	539	481	1,037			1,518
JPA Diversion	0	0	0	0	0			0
Self-Haul Plant Materials	16	45	34	92	95			187
SUBTOTAL - Disposed	169	40	110	796	320			1,115
SUBTOTAL - Diverted	225	335	573	572	1,133			1,705
COMMERCIAL RECYCLING RATE	30.7%	32.3%	31.9%	35.0%	31.6%			33.4%
RES'L YARDWASTE & RECYCLING RATE	64.8%	63.3%	61.0%	62.3%	63.1%			62.7%
TRANSFER STATION DIVERSION RATE	57.1%	89.2%	83.9%	41.8%	78.0%			60.5%
TOTAL DISPOSED	1,784	1,587	1,713	5,594	5,084			10,678
TOTAL DIVERTED	1,609	1,630	1,834	4,707	5,072			9,779
TOTAL DIVERSION RATE	47.4%	50.7%	51.7%	45.7%	49.9%			47.8%

CUMULATIVE ANNUAL COMPARISON OF SOLID WASTE GENERATION

Period: APR 1 - JUN 30, 2010

<u>JURISDICTION/TYPE</u>	<u>Year to Date 2005 Tons</u>	<u>Year to Date 2006 Tons</u>	<u>Year to Date 2007 Tons</u>	<u>Year to Date 2008 Tons</u>	<u>Year to Date 2009 Tons</u>	<u>Year to Date 2010 Tons</u>	<u>'09/'10 Tons Inc/(Dec)</u>	<u>'09/'10 % Change</u>
Menlo Park								
Commercial								
Commercial Waste	8,277	7,847	7,286	7,479	6,771	6,559	(212)	-3.1%
Roll-off (Franchised) Waste Transfer Station	1,071	466	311	239	279	216	(63)	-22.5%
Commercial Recycling	2,389	2,095	2,193	1,620	1,494	1,703	209	14.0%
Commercial Organics	948	1,118	1,033	1,108	1,106	1,286	179	16.2%
Commercial Other Diversion	332	530	543	703	576	402	(174)	-30.2%
SUBTOTAL - Disposed	9,348	8,313	7,596	7,718	7,050	6,775	(275)	-3.9%
SUBTOTAL - Diverted	3,668	3,743	3,769	3,431	3,176	3,390	214	6.7%
Residential								
Residential Waste	3,228	2,911	2,811	2,773	2,702	2,674	(27)	-1.0%
Residential Cleanup	102	66	70	67	122	113	(9)	-7.4%
Residential Curbside Recycling	1,839	1,785	1,533	1,576	1,421	1,453	33	2.3%
Residential Curbside Plant Materials	3,042	3,169	2,923	2,982	3,149	3,231	82	2.6%
SUBTOTAL - Disposed	3,331	2,977	2,881	2,840	2,824	2,787	(36)	-1.3%
SUBTOTAL - Diverted	4,881	4,955	4,456	4,558	4,570	4,684	114	2.5%
San Carlos Transfer Station								
Self-Haul Transfer Station	2,111	2,214	1,685	1,294	1,314	537	(776)	-59.1%
JPA City Vehicles Transfer Station	0	0	0	0	0	0	0	0.0%
Roll-off (Non-Franchised) Waste Transfer Station	1,089	1,353	753	844	815	578	(238)	-29.1%
Commercial Other	108	230	286	209	212	0	(212)	-100.0%
Transfer Station Diversion	634	717	597	665	696	1,518	822	118.0%
JPA Diversion	0	0	0	0	0	0	0	0.0%
Self-Haul Plant Materials	359	214	333	183	120	187	67	55.6%
SUBTOTAL - Disposed	3,307	3,797	2,724	2,347	2,341	1,115	(1,226)	-52.4%
SUBTOTAL - Diverted	993	931	930	849	816	1,705	889	108.9%
COMMERCIAL RECYCLING RATE	28.2%	31.0%	33.2%	30.8%	31.1%	33.4%		
RES'L YARDWASTE & RECYCLING RATE	59.4%	62.5%	60.7%	61.6%	61.8%	62.7%		
TRANSFER STATION DIVERSION RATE	23.1%	19.7%	25.5%	26.6%	25.8%	60.5%		
TOTAL DISPOSED	15,986	15,088	13,201	12,905	12,215	10,678		
TOTAL DIVERTED	9,543	9,628	9,155	8,838	8,562	9,779		
TOTAL DIVERSION RATE	37.4%	39.0%	41.0%	40.6%	41.2%	47.8%		

SOLID WASTE GENERATION IN TONS BY JURISDICTION & TYPE

Period: APR 1 - JUN 30, 2010

JURISDICTION/TYPE	CURRENT QUARTER			1ST QTR	2ND QTR	3RD QTR	4TH QTR	2010 TOTAL
	APR	MAY	JUN					
Redwood City								
Commercial								
Commercial Waste	2,190	2,086	2,138	6,408	6,413			12,821
Roll-off (Franchised) Waste Transfer Station	365	350	343	945	1,058			2,003
Roll-off (Franchised) Waste Ox Mtn Landfill¹	38	31	30	93	100			193
Commercial Recycling	425	412	447	1,296	1,285			2,580
Commercial Organics	254	263	248	651	765			1,416
Commercial Other Diversion	33	76	115	306	224			530
SUBTOTAL - Disposed (Excludes Ox Tons)	2,554	2,436	2,481	7,353	7,471			14,824
SUBTOTAL - Diverted	712	751	810	2,252	2,274			4,526
Residential								
Residential Waste	1,078	1,008	1,091	3,176	3,177			6,353
Residential Cleanup	51	62	59	102	172			274
Residential Curbside Recycling	447	379	421	1,358	1,247			2,605
Residential Curbside Plant Materials	778	781	759	1,993	2,317			4,310
SUBTOTAL - Disposed	1,129	1,070	1,150	3,278	3,349			6,627
SUBTOTAL - Diverted	1,224	1,159	1,180	3,351	3,563			6,915
San Carlos Transfer Station								
Self-Haul Transfer Station	473	171	448	2,043	1,092			3,135
JPA City Vehicles Transfer Station	0	2	4	0	6			7
Roll-off (Non-Franchised) Waste Transfer Station	30	16	25	193	72			265
Commercial Other	0	0	0	0	0			0
Transfer Station Diversion	717	879	878	2,291	2,474			4,765
JPA Diversion	21	4	6	60	31			90
Self-Haul Plant Materials	255	713	414	1,370	1,381			2,751
SUBTOTAL - Disposed	504	189	477	2,237	1,170			3,406
SUBTOTAL - Diverted	993	1,595	1,298	3,720	3,886			7,606
COMMERCIAL RECYCLING RATE	21.8%	23.6%	24.6%	23.4%	23.3%			23.4%
RES'L YARDWASTE & RECYCLING RATE	52.0%	52.0%	50.6%	50.6%	51.6%			51.1%
TRANSFER STATION DIVERSION RATE	66.3%	89.4%	73.1%	62.5%	76.9%			69.1%
TOTAL DISPOSED (Excludes Ox Tons)	4,187	3,695	4,107	12,868	11,990			24,858
TOTAL DIVERTED	2,929	3,506	3,288	9,324	9,723			19,047
TOTAL DIVERSION RATE	41.2%	48.7%	44.5%	42.0%	44.8%			43.4%

¹See Definitions

CUMULATIVE ANNUAL COMPARISON OF SOLID WASTE GENERATION

Period: APR 1 - JUN 30, 2010

JURISDICTION/TYPE	Year to Date 2005 Tons	Year to Date 2006 Tons	Year to Date 2007 Tons	Year to Date 2008 Tons	Year to Date 2009 Tons	Year to Date 2010 Tons	'09/'10 Tons Inc/(Dec)	'09/'10 % Change
Redwood City								
Commercial								
Commercial Waste	15,021	14,616	14,220	13,707	12,673	12,821	148	1.2%
Roll-off (Franchised) Waste Transfer Station	2,793	2,644	2,785	2,592	2,378	2,003	(375)	-15.8%
Roll-off (Franchised) Waste Ox Mtn Landfill¹	271	281	263	264	250	193	(57)	-23.0%
Commercial Recycling	2,959	2,624	2,289	2,535	2,595	2,580	(15)	-0.6%
Commercial Organics	911	1,344	1,324	1,350	1,324	1,416	92	7.0%
Commercial Other Diversion	188	319	255	312	420	530	109	26.0%
SUBTOTAL - Disposed (Excludes Ox Tons)	17,814	17,260	17,005	16,299	15,050	14,824	(432)	-1.5%
SUBTOTAL - Diverted	4,059	4,286	3,868	4,196	4,339	4,526	187	4.3%
Residential								
Residential Waste	7,729	7,049	6,740	6,605	6,290	6,353	63	1.0%
Residential Cleanup	280	192	210	218	282	274	(8)	-2.7%
Residential Curbside Recycling	2,992	2,846	2,744	2,869	2,439	2,605	165	6.8%
Residential Curbside Plant Materials	3,828	3,639	3,650	3,766	4,037	4,310	273	6.8%
SUBTOTAL - Disposed	8,010	7,241	6,950	6,823	6,572	6,627	55	0.8%
SUBTOTAL - Diverted	6,820	6,485	6,394	6,634	6,477	6,915	438	6.8%
San Carlos Transfer Station								
Self-Haul Transfer Station	13,360	12,976	10,342	8,043	7,256	3,135	(4,121)	-56.8%
JPA City Vehicles Transfer Station	30	24	12	3	16	7	(9)	-57.7%
Roll-off (Non-Franchised) Waste Transfer Station	1,382	1,000	358	514	494	265	(230)	-46.5%
Commercial Other	182	401	533	359	382	0	(382)	-100.0%
Transfer Station Diversion	2,847	2,224	3,435	3,708	3,129	4,765	1,636	52.3%
JPA Diversion	40	75	29	69	53	90	38	71.0%
Self-Haul Plant Materials	5,605	3,464	4,013	3,504	2,153	2,751	598	27.8%
SUBTOTAL - Disposed	14,953	14,401	11,245	8,919	8,149	3,406	(4,742)	-58.2%
SUBTOTAL - Diverted	8,491	5,763	7,477	7,281	5,335	7,606	2,271	42.6%
COMMERCIAL RECYCLING RATE	18.6%	19.9%	18.5%	20.5%	22.4%	23.4%		
RES'L YARDWASTE & RECYCLING RATE	46.0%	47.2%	47.9%	49.3%	49.6%	51.1%		
TRANSFER STATION DIVERSION RATE	36.2%	28.6%	39.9%	44.9%	39.6%	69.1%		
TOTAL DISPOSED (Excludes Ox Tons)	40,777	38,902	35,200	32,042	29,771	24,858		
TOTAL DIVERTED	19,370	16,534	17,739	18,112	16,151	19,047		
TOTAL DIVERSION RATE	32.2%	29.8%	33.5%	36.1%	35.2%	43.4%		

¹See Definitions

SOLID WASTE GENERATION IN TONS BY JURISDICTION & TYPE

Period: APR 1 - JUN 30, 2010

JURISDICTION/TYPE	CURRENT QUARTER			1ST QTR	2ND QTR	3RD QTR	4TH QTR	2010 TOTAL
	APR	MAY	JUN					
San Carlos								
Commercial								
Commercial Waste	726	679	699	2,091	2,104			4,195
Roll-off (Franchised) Waste Transfer Station	112	127	107	335	346			681
Commercial Recycling	161	152	155	505	468			973
Commercial Organics	56	54	57	153	167			321
Commercial Other Diversion	12	13	8	55	33			87
SUBTOTAL - Disposed	838	806	805	2,426	2,450			4,876
SUBTOTAL - Diverted	230	218	220	712	668			1,381
Residential								
Residential Waste	466	427	452	1,361	1,346			2,707
Residential Cleanup	25	30	31	53	86			139
Residential Curbside Recycling	272	237	251	817	760			1,577
Residential Curbside Plant Materials	553	497	506	1,263	1,555			2,818
SUBTOTAL - Disposed	491	457	484	1,414	1,432			2,846
SUBTOTAL - Diverted	825	734	756	2,080	2,315			4,395
San Carlos Transfer Station								
Self-Haul Transfer Station	216	72	203	904	491			1,394
JPA City Vehicles Transfer Station	0	0	1	1	1			2
Roll-off (Non-Franchised) Waste Transfer Station	47	52	35	168	134			302
Commercial Other	0	0	0	0	0			0
Transfer Station Diversion	526	581	583	1,221	1,690			2,910
JPA Diversion	11	1	2	136	14			150
Self-Haul Plant Materials	83	241	142	431	466			898
SUBTOTAL - Disposed	262	124	239	1,073	626			1,699
SUBTOTAL - Diverted	620	823	727	1,789	2,170			3,959
COMMERCIAL RECYCLING RATE	21.5%	21.3%	21.5%	22.7%	21.4%			22.1%
RES'L YARDWASTE & RECYCLING RATE	62.7%	61.6%	61.0%	59.5%	61.8%			60.7%
TRANSFER STATION DIVERSION RATE	70.3%	86.9%	75.2%	62.5%	77.6%			70.0%
TOTAL DISPOSED	1,592	1,388	1,529	4,912	4,508			9,420
TOTAL DIVERTED	1,674	1,776	1,703	4,581	5,154			9,734
TOTAL DIVERSION RATE	51.3%	56.1%	52.7%	48.3%	53.3%			50.8%

CUMULATIVE ANNUAL COMPARISON OF SOLID WASTE GENERATION

Period: APR 1 - JUN 30, 2010

JURISDICTION/TYPE	Year to Date 2005 Tons	Year to Date 2006 Tons	Year to Date 2007 Tons	Year to Date 2008 Tons	Year to Date 2009 Tons	Year to Date 2010 Tons	'09/'10 Tons Inc/(Dec)	'09/'10 % Change
San Carlos								
Commercial								
Commercial Waste	4,805	4,462	4,364	4,680	4,219	4,195	(25)	-0.6%
Roll-off (Franchised) Waste Transfer Station	391	710	912	1,017	720	681	(39)	-5.4%
Commercial Recycling	1,435	1,216	1,360	1,146	1,184	973	(211)	-17.9%
Commercial Organics	168	333	314	239	260	321	60	23.2%
Commercial Other Diversion	265	425	112	114	106	87	(19)	-17.5%
SUBTOTAL - Disposed	5,196	5,172	5,277	5,696	4,940	4,876	(64)	-1.3%
SUBTOTAL - Diverted	1,868	1,974	1,785	1,499	1,550	1,381	(170)	-10.9%
Residential								
Residential Waste	3,400	3,200	3,046	3,143	2,790	2,707	(83)	-3.0%
Residential Cleanup	130	95	107	107	149	139	(10)	-6.6%
Residential Curbside Recycling	1,864	1,937	1,930	1,848	1,598	1,577	(20)	-1.3%
Residential Curbside Plant Materials	2,062	1,982	1,972	1,988	2,474	2,818	344	13.9%
SUBTOTAL - Disposed	3,530	3,295	3,153	3,250	2,938	2,846	(92)	-3.1%
SUBTOTAL - Diverted	3,926	3,919	3,903	3,836	4,071	4,395	324	7.9%
San Carlos Transfer Station								
Self-Haul Transfer Station	7,312	6,741	5,187	4,250	3,613	1,394	(2,218)	-61.4%
JPA City Vehicles Transfer Station	30	26	19	12	19	2	(17)	-87.9%
Roll-off (Non-Franchised) Waste Transfer Station	1,271	1,016	472	389	389	302	(87)	-22.4%
Commercial Other	57	218	277	138	120	0	(120)	-100.0%
Transfer Station Diversion	1,672	1,939	1,962	2,535	2,285	2,910	625	27.3%
JPA Diversion	110	188	266	144	28	150	122	435.4%
Self-Haul Plant Materials	1,740	1,169	1,449	1,590	775	898	123	15.9%
SUBTOTAL - Disposed	8,670	8,001	5,955	4,790	4,141	1,699	(2,442)	-59.0%
SUBTOTAL - Diverted	3,522	3,297	3,677	4,269	3,088	3,959	870	28.2%
COMMERCIAL RECYCLING RATE	26.4%	27.6%	25.3%	20.8%	23.9%	22.1%		
RES'L YARDWASTE & RECYCLING RATE	52.7%	54.3%	55.3%	54.1%	58.1%	60.7%		
TRANSFER STATION DIVERSION RATE	28.9%	29.2%	38.2%	47.1%	42.7%	70.0%		
TOTAL DISPOSED	17,397	16,468	14,385	13,737	12,019	9,420		
TOTAL DIVERTED	9,316	9,189	9,365	9,604	8,710	9,734		
TOTAL DIVERSION RATE	34.9%	35.8%	39.4%	41.1%	42.0%	50.8%		

SOLID WASTE GENERATION IN TONS BY JURISDICTION & TYPE

Period: APR 1 - JUN 30, 2010

JURISDICTION/TYPE	CURRENT QUARTER			1ST QTR	2ND QTR	3RD QTR	4TH QTR	2010 TOTAL
	APR	MAY	JUN					
San Mateo								
Commercial								
Commercial Waste	2,132	2,151	2,184	6,480	6,467			12,947
Roll-off (Franchised) Waste Transfer Station	489	451	486	1,375	1,427			2,802
Commercial Recycling	639	600	624	1,850	1,863			3,713
Commercial Organics	233	250	241	763	724			1,487
Commercial Other Diversion	32	19	6	83	57			141
SUBTOTAL - Disposed	2,621	2,603	2,670	7,855	7,894			15,749
SUBTOTAL - Diverted	903	869	872	2,696	2,644			5,340
Residential								
Residential Waste	1,260	1,217	1,254	3,823	3,731			7,553
Residential Cleanup	59	77	86	135	222			357
Residential Curbside Recycling	559	468	512	1,567	1,539			3,106
Residential Curbside Plant Materials	1,036	935	921	2,272	2,893			5,165
SUBTOTAL - Disposed	1,319	1,294	1,340	3,957	3,953			7,910
SUBTOTAL - Diverted	1,595	1,404	1,433	3,839	4,432			8,271
San Carlos Transfer Station								
Self-Haul Transfer Station	265	98	229	1,106	593			1,699
JPA City Vehicles Transfer Station	13	14	13	22	39			61
Roll-off (Non-Franchised) Waste Transfer Station	80	58	48	268	186			455
Commercial Other	0	0	0	0	0			0
Transfer Station Diversion	467	517	438	1,481	1,422			2,903
JPA Diversion	0	0	0	0	0			0
Self-Haul Plant Materials	135	423	217	773	775			1,548
SUBTOTAL - Disposed	358	170	290	1,396	818			2,214
SUBTOTAL - Diverted	602	941	654	2,254	2,197			4,451
COMMERCIAL RECYCLING RATE	25.6%	25.0%	24.6%	25.6%	25.1%			25.3%
RES'L YARDWASTE & RECYCLING RATE	54.7%	52.0%	51.7%	49.2%	52.9%			51.1%
TRANSFER STATION DIVERSION RATE	62.7%	84.7%	69.3%	61.8%	72.9%			66.8%
TOTAL DISPOSED	4,298	4,067	4,300	13,208	12,665			25,873
TOTAL DIVERTED	3,101	3,213	2,959	8,789	9,273			18,062
TOTAL DIVERSION RATE	41.9%	44.1%	40.8%	40.0%	42.3%			41.1%

CUMULATIVE ANNUAL COMPARISON OF SOLID WASTE GENERATION

Period: APR 1 - JUN 30, 2010

JURISDICTION/TYPE	Year to Date 2005 Tons	Year to Date 2006 Tons	Year to Date 2007 Tons	Year to Date 2008 Tons	Year to Date 2009 Tons	Year to Date 2010 Tons	'09/'10 Tons Inc/(Dec)	'09/'10 % Change
San Mateo								
Commercial								
Commercial Waste	15,659	14,157	13,550	13,733	12,825	12,947	121	0.9%
Roll-off (Franchised) Waste Transfer Station	3,401	3,645	3,479	3,368	2,771	2,802	31	1.1%
Commercial Recycling	4,710	3,867	3,735	3,403	3,784	3,713	(71)	-1.9%
Commercial Organics	739	1,175	1,180	1,273	1,443	1,487	44	3.0%
Commercial Other Diversion	298	336	117	230	142	141	(1)	-0.8%
SUBTOTAL - Disposed	19,060	17,802	17,029	17,102	15,597	15,749	152	1.0%
SUBTOTAL - Diverted	5,747	5,378	5,032	4,905	5,368	5,340	(28)	-0.5%
Residential								
Residential Waste	9,057	7,938	7,817	7,979	7,599	7,553	(45)	-0.6%
Residential Cleanup	361	317	293	310	374	357	(17)	-4.5%
Residential Curbside Recycling	3,668	3,676	3,517	3,458	3,071	3,106	35	1.1%
Residential Curbside Plant Materials	4,640	4,694	4,494	4,733	4,808	5,165	357	7.4%
SUBTOTAL - Disposed	9,418	8,256	8,110	8,289	7,972	7,910	(62)	-0.8%
SUBTOTAL - Diverted	8,308	8,370	8,012	8,191	7,879	8,271	391	5.0%
San Carlos Transfer Station								
Self-Haul Transfer Station	6,896	7,268	6,158	5,301	4,099	1,699	(2,400)	-58.6%
JPA City Vehicles Transfer Station	55	62	58	72	60	61	0	0.4%
Roll-off (Non-Franchised) Waste Transfer Station	1,231	916	496	356	538	455	(84)	-15.6%
Commercial Other	145	303	378	267	279	0	(279)	-100.0%
Transfer Station Diversion	1,503	1,819	2,042	3,180	2,019	2,903	884	43.8%
JPA Diversion	20	3	9	0	0	0	0	0.0%
Self-Haul Plant Materials	2,184	1,608	2,218	2,261	1,187	1,548	361	30.5%
SUBTOTAL - Disposed	8,327	8,548	7,091	5,995	4,976	2,214	(2,762)	-55.5%
SUBTOTAL - Diverted	3,706	3,431	4,268	5,441	3,206	4,451	1,245	38.8%
COMMERCIAL RECYCLING RATE	23.2%	23.2%	22.8%	22.3%	25.6%	25.3%		
RES'L YARDWASTE & RECYCLING RATE	46.9%	50.3%	49.7%	49.7%	49.7%	51.1%		
TRANSFER STATION DIVERSION RATE	30.8%	28.6%	37.6%	47.6%	39.2%	66.8%		
TOTAL DISPOSED	36,805	34,606	32,230	31,386	28,545	25,873		
TOTAL DIVERTED	17,762	17,178	17,312	18,538	16,453	18,062		
TOTAL DIVERSION RATE	32.6%	33.2%	34.9%	37.1%	36.6%	41.1%		

SOLID WASTE GENERATION IN TONS BY JURISDICTION & TYPE

Period: APR 1 - JUN 30, 2010

JURISDICTION/TYPE	CURRENT QUARTER			1ST QTR	2ND QTR	3RD QTR	4TH QTR	2010 TOTAL
	APR	MAY	JUN					
North Fair Oaks								
Commercial								
Commercial Waste	279	246	249	816	773			1,589
Roll-off (Franchised) Waste Transfer Station	0	0	0	0	0			0
Commercial Recycling	52	50	54	165	156			321
Commercial Organics	42	39	36	137	117			254
Commercial Other Diversion	0	0	0	0	0			0
SUBTOTAL - Disposed	279	246	249	816	773			1,589
SUBTOTAL - Diverted	93	89	91	302	273			575
Residential								
Residential Waste	327	310	310	893	947			1,840
Residential Cleanup	9	10	7	14	26			39
Residential Curbside Recycling	57	44	44	161	145			306
Residential Curbside Plant Materials	154	142	125	412	420			832
SUBTOTAL - Disposed	336	320	317	907	973			1,879
SUBTOTAL - Diverted	210	186	169	573	565			1,138
San Carlos Transfer Station								
Self-Haul Transfer Station	0	0	0	0	0			0
JPA City Vehicles Transfer Station	0	0	0	0	0			0
Roll-off (Non-Franchised) Waste Transfer Station	0	0	0	0	0			0
Commercial Other	0	0	0	0	0			0
Transfer Station Diversion	0	0	0	0	0			0
JPA Diversion	0	0	0	0	0			0
Self-Haul Plant Materials	0	0	0	0	0			0
SUBTOTAL - Disposed	0	0	0	0	0			0
SUBTOTAL - Diverted	0	0	0	0	0			0
COMMERCIAL RECYCLING RATE	25.1%	26.5%	26.7%	27.0%	26.1%			26.6%
RES'L YARDWASTE & RECYCLING RATE	38.5%	36.8%	34.8%	38.7%	36.8%			37.7%
TRANSFER STATION DIVERSION RATE	0.0%	0.0%	0.0%	0.0%	0.0%			0.0%
TOTAL DISPOSED	615	566	566	1,722	1,746			3,468
TOTAL DIVERTED	304	275	260	875	838			1,713
TOTAL DIVERSION RATE	33.1%	32.7%	31.5%	33.7%	32.4%			33.1%

CUMULATIVE ANNUAL COMPARISON OF SOLID WASTE GENERATION

Period: APR 1 - JUN 30, 2010

JURISDICTION/TYPE	Year to Date 2005 Tons	Year to Date 2006 Tons	Year to Date 2007 Tons	Year to Date 2008 Tons	Year to Date 2009 Tons	Year to Date 2010 Tons	'09/'10 Tons Inc/(Dec)	'09/'10 % Change
North Fair Oaks								
Commercial								
Commercial Waste	2,447	2,304	2,617	2,126	1,819	1,589	(230)	-12.6%
Roll-off (Franchised) Waste Transfer Station	0	0	0	0	0	0	0	0.0%
Commercial Recycling	319	288	286	324	411	321	(90)	-21.9%
Commercial Organics	158	196	220	264	249	254	5	2.1%
Commercial Other Diversion	0	0	0	0	0	0	0	0.0%
SUBTOTAL - Disposed	2,447	2,304	2,617	2,126	1,819	1,589	(230)	-12.6%
SUBTOTAL - Diverted	477	484	506	587	660	575	(85)	-12.9%
Residential								
Residential Waste	1,714	1,815	1,732	1,652	1,721	1,840	120	7.0%
Residential Cleanup	35	29	24	28	37	39	2	4.6%
Residential Curbside Recycling	341	317	296	333	303	306	4	1.2%
Residential Curbside Plant Materials	703	777	773	801	830	832	2	0.3%
SUBTOTAL - Disposed	1,749	1,844	1,756	1,681	1,758	1,879	121	6.9%
SUBTOTAL - Diverted	1,044	1,094	1,069	1,134	1,132	1,138	6	0.5%
San Carlos Transfer Station								
Self-Haul Transfer Station	0	0	0	0	0	0	0	0.0%
JPA City Vehicles Transfer Station	0	0	0	0	0	0	0	0.0%
Roll-off (Non-Franchised) Waste Transfer Station	0	0	0	0	0	0	0	0.0%
Commercial Other	28	58	95	50	54	0	(54)	-100.0%
Transfer Station Diversion	0	0	0	0	0	0	0	0.0%
JPA Diversion	0	0	0	0	0	0	0	0.0%
Self-Haul Plant Materials	0	0	0	0	0	0	0	0.0%
SUBTOTAL - Disposed	28	58	95	50	54	0	(54)	-100.0%
SUBTOTAL - Diverted	0	0	0	0	0	0	0	0.0%
COMMERCIAL RECYCLING RATE	16.3%	17.4%	16.2%	21.6%	26.6%	26.6%		
RES'L YARDWASTE & RECYCLING RATE	37.4%	37.2%	37.8%	40.3%	39.2%	37.7%		
TRANSFER STATION DIVERSION RATE	0.0%	0.0%	0.0%	0.0%	0.0%	0.0%		
TOTAL DISPOSED	4,224	4,206	4,469	3,856	3,631	3,468		
TOTAL DIVERTED	1,520	1,578	1,575	1,721	1,792	1,713		
TOTAL DIVERSION RATE	26.5%	27.3%	26.1%	30.9%	33.1%	33.1%		

SOLID WASTE GENERATION IN TONS BY JURISDICTION & TYPE

Period: APR 1 - JUN 30, 2010

JURISDICTION/TYPE	CURRENT QUARTER			1ST QTR	2ND QTR	3RD QTR	4TH QTR	2010 TOTAL
	APR	MAY	JUN					
Unincorporated								
Commercial								
Commercial Waste	141	130	129	418	401			819
Roll-off (Franchised) Waste Transfer Station	0	0	0	0	0			0
Commercial Recycling	44	40	46	133	130			264
Commercial Organics	17	17	17	47	50			97
Commercial Other Diversion	0	0	0	0	0			0
SUBTOTAL - Disposed	141	130	129	418	401			819
SUBTOTAL - Diverted	60	57	63	180	180			360
Residential								
Residential Waste	289	305	310	913	904			1,816
Residential Cleanup	12	15	15	28	42			71
Residential Curbside Recycling	152	156	162	492	470			962
Residential Curbside Plant Materials	259	280	253	705	792			1,497
SUBTOTAL - Disposed	300	320	326	941	946			1,887
SUBTOTAL - Diverted	411	436	415	1,198	1,262			2,459
San Carlos Transfer Station								
Self-Haul Transfer Station	2	2	6	14	10			24
JPA City Vehicles Transfer Station	0	0	0	0	0			0
Roll-off (Non-Franchised) Waste Transfer Station	0	0	0	0	0			0
Commercial Other	0	0	0	0	0			0
Transfer Station Diversion	0	3	3	10	7			17
JPA Diversion	0	0	0	0	0			0
Self-Haul Plant Materials	2	1	1	2	3			5
SUBTOTAL - Disposed	2	2	6	14	10			24
SUBTOTAL - Diverted	2	4	4	12	10			22
COMMERCIAL RECYCLING RATE	29.9%	30.5%	32.8%	30.1%	31.0%			30.6%
RES'L YARDWASTE & RECYCLING RATE	57.8%	57.7%	56.0%	56.0%	57.2%			56.6%
TRANSFER STATION DIVERSION RATE	51.3%	71.5%	40.4%	45.4%	51.0%			47.8%
TOTAL DISPOSED	443	452	461	1,374	1,357			2,730
TOTAL DIVERTED	473	497	482	1,389	1,452			2,842
TOTAL DIVERSION RATE	51.6%	52.4%	51.1%	50.3%	51.7%			51.0%

CUMULATIVE ANNUAL COMPARISON OF SOLID WASTE GENERATION

Period: APR 1 - JUN 30, 2010

<u>JURISDICTION/TYPE</u>	<u>Year to Date 2005 Tons</u>	<u>Year to Date 2006 Tons</u>	<u>Year to Date 2007 Tons</u>	<u>Year to Date 2008 Tons</u>	<u>Year to Date 2009 Tons</u>	<u>Year to Date 2010 Tons</u>	<u>'09/'10 Tons Inc/(Dec)</u>	<u>'09/'10 % Change</u>
Unincorporated								
Commercial								
Commercial Waste	1,184	1,096	1,021	984	853	819	(34)	-3.9%
Roll-off (Franchised) Waste Transfer Station	2	0	0	0	0	0	0	0.0%
Commercial Recycling	219	192	199	191	296	264	(32)	-10.9%
Commercial Organics	26	48	74	99	96	97	0	0.5%
Commercial Other Diversion	46	23	6	0	0	0	0	0.0%
SUBTOTAL - Disposed	1,185	1,096	1,021	984	853	819	(34)	-3.9%
SUBTOTAL - Diverted	291	263	280	290	392	360	(32)	-8.1%
Residential								
Residential Waste	2,106	2,520	2,209	1,859	1,786	1,816	30	1.7%
Residential Cleanup	70	50	59	61	74	71	(4)	-5.0%
Residential Curbside Recycling	1,291	1,198	1,080	1,066	972	962	(10)	-1.0%
Residential Curbside Plant Materials	1,422	1,312	1,315	1,391	1,412	1,497	85	6.1%
SUBTOTAL - Disposed	2,176	2,571	2,268	1,920	1,861	1,887	26	1.4%
SUBTOTAL - Diverted	2,713	2,510	2,395	2,458	2,384	2,459	75	3.2%
San Carlos Transfer Station								
Self-Haul Transfer Station	141	206	122	89	90	24	(66)	-73.5%
JPA City Vehicles Transfer Station	0	0	0	0	0	0	0	0.0%
Roll-off (Non-Franchised) Waste Transfer Station	3	1	5	0	0	0	0	0.0%
Commercial Other	17	34	42	28	27	0	(27)	-100.0%
Transfer Station Diversion	12	22	21	19	33	17	(16)	-49.6%
JPA Diversion	0	0	0	0	0	0	0	0.0%
Self-Haul Plant Materials	21	15	12	5	11	5	(5)	-50.2%
SUBTOTAL - Disposed	160	240	168	116	118	24	(94)	-79.6%
SUBTOTAL - Diverted	32	37	33	24	44	22	(22)	-49.7%
COMMERCIAL RECYCLING RATE	19.7%	19.4%	21.5%	22.8%	31.5%	30.6%		
RES'L YARDWASTE & RECYCLING RATE	55.5%	49.4%	51.4%	56.1%	56.2%	56.6%		
TRANSFER STATION DIVERSION RATE	16.7%	13.4%	16.2%	16.9%	27.1%	47.8%		
TOTAL DISPOSED	3,522	3,907	3,457	3,020	2,831	2,730		
TOTAL DIVERTED	3,037	2,810	2,708	2,772	2,820	2,842		
TOTAL DIVERSION RATE	46.3%	41.8%	43.9%	47.9%	49.9%	51.0%		

SOLID WASTE GENERATION IN TONS BY JURISDICTION & TYPE

Period: APR 1 - JUN 30, 2010

JURISDICTION/TYPE	CURRENT QUARTER			1ST QTR	2ND QTR	3RD QTR	4TH QTR	2010 TOTAL
	APR	MAY	JUN					
West Bay Sanitary (Unincorporated)								
Commercial								
Commercial Waste	42	41	43	128	126			253
Roll-off (Franchised) Waste Transfer Station	0	0	0	0	0			0
Commercial Recycling	21	20	22	71	64			135
Commercial Organics	4	4	3	11	11			23
Commercial Other Diversion	0	0	0	0	0			0
SUBTOTAL - Disposed	42	41	43	128	126			253
SUBTOTAL - Diverted	25	24	26	82	75			157
Residential								
Residential Waste	111	107	131	353	350			702
Residential Cleanup	5	8	8	11	22			32
Residential Curbside Recycling	75	58	69	239	203			442
Residential Curbside Plant Materials	143	127	124	435	394			829
SUBTOTAL - Disposed	116	116	139	363	371			735
SUBTOTAL - Diverted	218	185	194	674	597			1,271
San Carlos Transfer Station								
Self-Haul Transfer Station	0	0	0	0	0			0
JPA City Vehicles Transfer Station	0	0	0	0	0			0
Roll-off (Non-Franchised) Waste Transfer Station	0	0	0	0	0			0
Commercial Other	0	0	0	0	0			0
Transfer Station Diversion	0	0	0	0	0			0
JPA Diversion	0	0	0	0	0			0
Self-Haul Plant Materials	0	0	0	0	0			0
SUBTOTAL - Disposed	0	0	0	0	0			0
SUBTOTAL - Diverted	0	0	0	0	0			0
COMMERCIAL RECYCLING RATE	37.6%	37.2%	37.4%	39.1%	37.4%			38.3%
RES'L YARDWASTE & RECYCLING RATE	65.3%	61.5%	58.2%	65.0%	61.7%			63.4%
TRANSFER STATION DIVERSION RATE	0.0%	0.0%	0.0%	0.0%	0.0%			0.0%
TOTAL DISPOSED	158	157	182	491	497			988
TOTAL DIVERTED	243	209	219	756	672			1,428
TOTAL DIVERSION RATE	60.6%	57.2%	54.6%	60.6%	57.5%			59.1%

CUMULATIVE ANNUAL COMPARISON OF SOLID WASTE GENERATION

Period: APR 1 - JUN 30, 2010

JURISDICTION/TYPE	Year to Date 2005 Tons	Year to Date 2006 Tons	Year to Date 2007 Tons	Year to Date 2008 Tons	Year to Date 2009 Tons	Year to Date 2010 Tons	'09/'10 Tons Inc/(Dec)	'09/'10 % Change
West Bay Sanitary (Unincorporated)								
Commercial								
Commercial Waste	341	311	342	343	247	253	6	2.5%
Roll-off (Franchised) Waste Transfer Station	0	0	0	0	0	0	0	0.0%
Commercial Recycling	140	128	141	132	161	135	(26)	-16.3%
Commercial Organics	0	19	26	26	21	23	1	5.1%
Commercial Other Diversion	0	0	0	0	0	0	0	0.0%
SUBTOTAL - Disposed	341	311	342	343	247	253	6	2.5%
SUBTOTAL - Diverted	140	147	167	158	182	157	(25)	-13.7%
Residential								
Residential Waste	949	875	812	790	679	702	23	3.4%
Residential Cleanup	26	16	20	19	33	32	(0)	-0.7%
Residential Curbside Recycling	524	525	459	468	420	442	22	5.3%
Residential Curbside Plant Materials	708	706	605	658	741	829	88	11.9%
SUBTOTAL - Disposed	975	891	832	808	712	735	23	3.2%
SUBTOTAL - Diverted	1,232	1,231	1,064	1,126	1,161	1,271	110	9.5%
San Carlos Transfer Station								
Self-Haul Transfer Station	0	0	0	0	0	0	0	0.0%
JPA City Vehicles Transfer Station	0	0	0	0	0	0	0	0.0%
Roll-off (Non-Franchised) Waste Transfer Station	0	0	0	0	2	0	(2)	0.0%
Commercial Other	6	11	17	12	9	0	(9)	-100.0%
Transfer Station Diversion	0	0	0	0	0	0	0	0.0%
JPA Diversion	0	0	0	0	0	0	0	0.0%
Self-Haul Plant Materials	0	0	0	0	0	0	0	0.0%
SUBTOTAL - Disposed	6	11	17	12	11	0	(11)	-100.0%
SUBTOTAL - Diverted	0	0	0	0	0	0	0	0.0%
COMMERCIAL RECYCLING RATE	29.1%	32.0%	32.9%	31.6%	42.4%	38.3%		
RES'L YARDWASTE & RECYCLING RATE	55.8%	58.0%	56.1%	58.2%	62.0%	63.4%		
TRANSFER STATION DIVERSION RATE	0.0%	0.0%	0.0%	0.0%	0.0%	0.0%		
TOTAL DISPOSED	1,322	1,213	1,191	1,163	970	988		
TOTAL DIVERTED	1,373	1,378	1,231	1,284	1,343	1,428		
TOTAL DIVERSION RATE	50.9%	53.2%	50.8%	52.5%	58.1%	59.1%		

SOLID WASTE GENERATION IN TONS BY JURISDICTION & TYPE

Period: APR 1 - JUN 30, 2010

JURISDICTION/TYPE	CURRENT QUARTER			1ST QTR	2ND QTR	3RD QTR	4TH QTR	2010 TOTAL
	APR	MAY	JUN					
TOTAL SBWMA								
Commercial								
Commercial Waste	9,185	8,882	9,102	27,465	27,169			54,634
Roll-off (Franchised) Waste Transfer Station	2,166	2,052	2,119	5,858	6,337			12,194
Commercial Recycling	2,115	2,022	2,124	6,465	6,261			12,726
Commercial Organics	1,205	1,231	1,192	3,364	3,628			6,992
Commercial Other Diversion	289	243	339	1,126	871			1,997
SUBTOTAL - Disposed	11,351	10,934	11,220	33,323	33,505			66,828
SUBTOTAL - Diverted	3,609	3,496	3,655	10,956	10,760			21,715
Residential								
Residential Waste	6,039	5,824	6,209	18,240	18,073			36,313
Residential Cleanup	264	339	344	571	947			1,518
Residential Curbside Recycling	2,718	2,373	2,574	8,116	7,665			15,780
Residential Curbside Plant Materials	5,366	5,005	4,961	13,340	15,332			28,672
SUBTOTAL - Disposed	6,304	6,163	6,554	18,811	19,020			37,831
SUBTOTAL - Diverted	8,083	7,378	7,536	21,456	22,997			44,452
San Carlos Transfer Station								
Self-Haul Transfer Station	1,316	449	1,196	5,384	2,960			8,345
JPA City Vehicles Transfer Station	94	82	76	195	252			447
Roll-off (Non-Franchised) Waste Transfer Station	299	180	175	1,303	654			1,957
Commercial Other	41	38	36	101	115			217
Transfer Station Diversion	2,449	2,923	3,183	7,206	8,556			15,762
JPA Diversion	111	85	105	776	301			1,078
Self-Haul Plant Materials	549	1,586	917	2,998	3,052			6,050
SUBTOTAL - Disposed	1,750	750	1,483	6,984	3,982			10,966
SUBTOTAL - Diverted	3,109	4,594	4,206	10,980	11,909			22,890
COMMERCIAL RECYCLING RATE	24.1%	24.2%	24.6%	24.7%	24.3%			24.5%
RES'L YARDWASTE & RECYCLING RATE	56.2%	54.5%	53.5%	53.3%	54.7%			54.0%
TRANSFER STATION DIVERSION RATE	64.0%	86.0%	73.9%	61.1%	74.9%			67.6%
TOTAL DISPOSED	19,405	17,846	19,256	59,118	56,507			115,625
TOTAL DIVERTED	14,802	15,468	15,396	43,392	45,666			89,057
TOTAL DIVERSION RATE	43.3%	46.4%	44.4%	42.3%	44.7%			43.5%

CUMULATIVE ANNUAL COMPARISON OF SOLID WASTE GENERATION

Period: APR 1 - JUN 30, 2010

JURISDICTION/TYPE	Year to Date 2005 Tons	Year to Date 2006 Tons	Year to Date 2007 Tons	Year to Date 2008 Tons	Year to Date 2009 Tons	Year to Date 2010 Tons	'09/'10 Tons Inc/(Dec)	'09/'10 % Change
TOTAL SBWMA								
Commercial								
Commercial Waste	67,144	65,919	60,550	60,106	55,125	54,634	(491)	-0.9%
Roll-off (Franchised) Waste Transfer Station	14,347	10,778	14,751	14,346	12,545	12,194	(351)	-2.8%
Commercial Recycling	16,394	13,788	13,633	12,627	13,253	12,726	(527)	-4.0%
Commercial Organics	3,861	6,055	5,818	5,964	6,293	6,992	699	11.1%
Commercial Other Diversion	1,913	2,491	1,660	2,024	1,974	1,997	23	1.2%
SUBTOTAL - Disposed	81,491	76,696	75,301	74,452	67,670	66,828	(842)	-1.2%
SUBTOTAL - Diverted	22,168	22,334	21,111	20,615	21,520	21,715	195	0.9%
Residential								
Residential Waste	42,908	39,947	38,391	37,783	35,788	36,313	525	1.5%
Residential Cleanup	1,430	1,338	1,176	1,201	1,553	1,518	(35)	-2.3%
Residential Curbside Recycling	18,484	18,391	17,504	17,617	15,365	15,780	415	2.7%
Residential Curbside Plant Materials	25,396	25,082	24,184	25,446	26,450	28,672	2,222	8.4%
SUBTOTAL - Disposed	44,338	41,285	39,568	38,984	37,341	37,831	490	1.3%
SUBTOTAL - Diverted	43,880	43,473	41,688	43,062	41,815	44,452	2,637	6.3%
San Carlos Transfer Station								
Self-Haul Transfer Station	35,466	34,870	28,447	22,974	20,040	8,345	(11,695)	-58.4%
JPA City Vehicles Transfer Station	595	636	494	505	558	447	(112)	-20.0%
Roll-off (Non-Franchised) Waste Transfer Station	6,438	5,839	2,765	2,626	2,708	1,957	(751)	-27.7%
Commercial Other	1,051	2,003	2,465	1,704	1,769	217	(1,553)	-87.8%
Transfer Station Diversion	9,477	9,388	11,610	13,918	11,038	15,762	4,724	42.8%
JPA Diversion	1,337	1,742	1,495	1,476	1,078	1,078	(1)	-0.1%
Self-Haul Plant Materials	10,905	7,104	8,894	8,521	4,786	6,050	1,264	26.4%
SUBTOTAL - Disposed	43,550	43,348	34,170	27,809	25,076	10,966	(14,110)	-56.3%
SUBTOTAL - Diverted	21,719	18,234	21,998	23,915	16,903	22,890	5,987	35.4%
COMMERCIAL RECYCLING RATE	21.4%	22.6%	21.9%	21.7%	24.1%	24.5%		
RES'L YARDWASTE & RECYCLING RATE	49.7%	51.3%	51.3%	52.5%	52.8%	54.0%		
TRANSFER STATION DIVERSION RATE	33.3%	29.6%	39.2%	46.2%	40.3%	67.6%		
TOTAL DISPOSED	169,379	161,330	149,039	141,245	130,087	115,625		
TOTAL DIVERTED	87,767	84,042	84,798	87,593	80,238	89,057		
TOTAL DIVERSION RATE	34.1%	34.3%	36.3%	38.3%	38.1%	43.5%		

SOLID WASTE GENERATION IN TONS BY JURISDICTION & TYPE

Period: APR 1 - JUN 30, 2010

JURISDICTION/TYPE	CURRENT QUARTER			1ST QTR	2ND QTR	3RD QTR	4TH QTR	2010 TOTAL
	APR	MAY	JUN					
NON-SBWMA AREAS								
Commercial								
Commercial Waste	0	3	2	3	5			8
Roll-off (Franchised) Waste Transfer Station	0	0	0	0	0			0
Commercial Recycling	0	0	0	0	0			0
Commercial Organics	0	0	0	0	0			0
Commercial Other Diversion	0	0	0	9	0			9
SUBTOTAL - Disposed	0	3	2	3	5			8
SUBTOTAL - Diverted	0	0	0	9	0			9
Residential								
Residential Waste	0	11	5	10	16			26
Residential Cleanup	0	0	0	0	0			0
Residential Curbside Recycling	0	2	0	2	2			4
Residential Curbside Plant Materials	0	0	0	0	0			0
SUBTOTAL - Disposed	0	11	5	10	16			26
SUBTOTAL - Diverted	0	2	0	2	2			4
San Carlos Transfer Station								
Self-Haul Transfer Station	147	50	134	534	331			865
JPA City Vehicles Transfer Station	0	0	0	0	0			0
Roll-off (Non-Franchised) Waste Transfer Station	0	0	0	0	0			0
Commercial Other	0	0	0	0	0			0
Transfer Station Diversion	572	595	566	1,566	1,732			3,298
JPA Diversion	0	0	0	0	0			0
Self-Haul Plant Materials	29	77	58	195	164			359
SUBTOTAL - Disposed	147	50	134	534	331			865
SUBTOTAL - Diverted	601	672	624	1,761	1,896			3,657
COMMERCIAL RECYCLING RATE	0.0%	0.0%	0.0%	75.5%	0.0%			53.4%
RES'L YARDWASTE & RECYCLING RATE	0.0%	14.0%	0.0%	20.5%	9.9%			14.1%
TRANSFER STATION DIVERSION RATE	80.3%	93.1%	82.3%	76.7%	85.1%			80.9%
TOTAL DISPOSED	148	64	141	546	353			899
TOTAL DIVERTED	601	674	624	1,773	1,898			3,671
TOTAL DIVERSION RATE	80.3%	91.3%	81.6%	76.4%	84.3%			80.3%

CUMULATIVE ANNUAL COMPARISON OF SOLID WASTE GENERATION

Period: APR 1 - JUN 30, 2010

<u>JURISDICTION/TYPE</u>	<u>Year to Date 2005 Tons</u>	<u>Year to Date 2006 Tons</u>	<u>Year to Date 2007 Tons</u>	<u>Year to Date 2008 Tons</u>	<u>Year to Date 2009 Tons</u>	<u>Year to Date 2010 Tons</u>	<u>'09/'10 Tons Inc/(Dec)</u>	<u>'09/'10 % Change</u>
NON-SBWMA AREAS								
Commercial								
Commercial Waste	1	12	11	6	8	8	0	4.3%
Roll-off (Franchised) Waste Transfer Station	0	0	2	11	2	0	(2)	0.0%
Commercial Recycling	1,054	799	532	0	0	0	0	0.0%
Commercial Organics	0	0	0	0	0	0	0	0.0%
Commercial Other Diversion	14	3	0	0	17	9	(7)	-44.4%
SUBTOTAL - Disposed	1	12	13	17	9	8	(1)	-14.2%
SUBTOTAL - Diverted	1,069	801	532	0	17	9	(7)	-44.4%
Residential								
Residential Waste	3	27	18	18	23	26	3	10.9%
Residential Cleanup	0	0	0	0	0	0	0	0.0%
Residential Curbside Recycling	772	638	498	4	9	4	(5)	-52.6%
Residential Curbside Plant Materials	133	91	84	122	32	0	(32)	-100.0%
SUBTOTAL - Disposed	3	27	18	18	23	26	3	10.9%
SUBTOTAL - Diverted	905	729	581	125	41	4	(37)	-89.7%
San Carlos Transfer Station								
Self-Haul Transfer Station	3,108	3,326	2,770	2,192	2,052	865	(1,187)	-57.8%
JPA City Vehicles Transfer Station	0	0	0	0	0	0	0	0.0%
Roll-off (Non-Franchised) Waste Transfer Station	66	77	8	3	2	0	(2)	0.0%
Commercial Other	0	0	0	0	0	0	0	0.0%
Transfer Station Diversion	774	2,523	2,282	2,025	2,252	3,298	1,047	46.5%
JPA Diversion	0	0	0	0	0	0	0	0.0%
Self-Haul Plant Materials	496	339	487	459	297	359	62	20.9%
SUBTOTAL - Disposed	3,174	3,403	2,778	2,195	2,054	865	(1,189)	-57.9%
SUBTOTAL - Diverted	1,270	2,861	2,769	2,484	2,549	3,657	1,109	43.5%
COMMERCIAL RECYCLING RATE	99.9%	98.6%	97.5%	0.0%	63.8%	53.4%		
RES'L YARDWASTE & RECYCLING RATE	99.7%	96.4%	97.0%	87.5%	64.0%	14.1%		
TRANSFER STATION DIVERSION RATE	28.6%	45.7%	49.9%	53.1%	55.4%	80.9%		
TOTAL DISPOSED	3,178	3,442	2,810	2,230	2,087	899		
TOTAL DIVERTED	3,243	4,391	3,882	2,610	2,607	3,671		
TOTAL DIVERSION RATE	50.5%	56.1%	58.0%	53.9%	55.5%	80.3%		

SOLID WASTE GENERATION IN TONS BY JURISDICTION & TYPE

Period: APR 1 - JUN 30, 2010

JURISDICTION/TYPE	CURRENT QUARTER			1ST QTR	2ND QTR	3RD QTR	4TH QTR	2010 TOTAL
	APR	MAY	JUN					
TOTAL TRANSFER STATION								
Commercial								
Commercial Waste	9,185	8,885	9,103	27,468	27,174			54,642
Roll-off (Franchised) Waste Transfer Station	2,166	2,052	2,119	5,858	6,337			12,194
Commercial Recycling	2,115	2,022	2,124	6,465	6,261			12,726
Commercial Organics	1,205	1,231	1,192	3,364	3,628			6,992
Commercial Other Diversion	289	243	339	1,136	871			2,006
SUBTOTAL - Disposed	11,351	10,937	11,222	33,326	33,510			66,836
SUBTOTAL - Diverted	3,609	3,496	3,655	10,965	10,760			21,725
Residential								
Residential Waste	6,040	5,835	6,214	18,250	18,089			36,339
Residential Cleanup	264	339	344	571	947			1,518
Residential Curbside Recycling	2,718	2,374	2,574	8,118	7,666			15,784
Residential Curbside Plant Materials	5,366	5,005	4,961	13,340	15,332			28,672
SUBTOTAL - Disposed	6,304	6,174	6,559	18,821	19,036			37,857
SUBTOTAL - Diverted	8,083	7,380	7,536	21,458	22,998			44,457
San Carlos Transfer Station								
Self-Haul Transfer Station	1,463	499	1,330	5,918	3,292			9,210
JPA City Vehicles Transfer Station	94	82	76	195	252			447
Roll-off (Non-Franchised) Waste Transfer Station	299	180	175	1,303	654			1,957
Commercial Other	41	38	36	101	115			217
Transfer Station Diversion	3,021	3,518	3,749	8,771	10,288			19,060
JPA Diversion	111	85	105	776	301			1,078
Self-Haul Plant Materials	578	1,663	975	3,193	3,216			6,410
SUBTOTAL - Disposed	1,897	799	1,617	7,517	4,313			11,831
SUBTOTAL - Diverted	3,710	5,266	4,829	12,741	13,806			26,547
COMMERCIAL RECYCLING RATE	24.1%	24.2%	24.6%	24.8%	24.3%			24.5%
RES'L YARDWASTE & RECYCLING RATE	56.2%	54.4%	53.5%	53.3%	54.7%			54.0%
TRANSFER STATION DIVERSION RATE	66.2%	86.8%	74.9%	62.9%	76.2%			69.2%
TOTAL DISPOSED	19,552	17,910	19,397	59,664	56,860			116,524
TOTAL DIVERTED	15,402	16,141	16,020	45,164	47,564			92,728
TOTAL DIVERSION RATE	44.1%	47.4%	45.2%	43.1%	45.5%			44.3%

CUMULATIVE ANNUAL COMPARISON OF SOLID WASTE GENERATION

Period: APR 1 - JUN 30, 2010

JURISDICTION/TYPE	Year to Date 2005 Tons	Year to Date 2006 Tons	Year to Date 2007 Tons	Year to Date 2008 Tons	Year to Date 2009 Tons	Year to Date 2010 Tons	'09/'10 Tons Inc/(Dec)	'09/'10 % Change
TOTAL TRANSFER STATION								
Commercial								
Commercial Waste	67,145	65,930	60,561	60,112	55,132	54,642	(490)	-0.9%
Roll-off (Franchised) Waste Transfer Station	14,347	10,778	14,753	14,357	12,547	12,194	(353)	-2.8%
Commercial Recycling	17,448	14,587	14,165	12,627	13,253	12,726	(527)	-4.0%
Commercial Organics	3,861	6,055	5,818	5,964	6,293	6,992	699	11.1%
Commercial Other Diversion	1,928	2,494	1,660	2,024	1,991	2,006	15	0.8%
SUBTOTAL - Disposed	81,492	76,708	75,314	74,470	67,679	66,836	(843)	-1.2%
SUBTOTAL - Diverted	23,237	23,136	21,643	20,615	21,537	21,725	188	0.9%
Residential								
Residential Waste	42,911	39,974	38,410	37,801	35,811	36,339	528	1.5%
Residential Cleanup	1,430	1,338	1,176	1,201	1,553	1,518	(35)	-2.3%
Residential Curbside Recycling	19,256	19,029	18,002	17,620	15,374	15,784	410	2.7%
Residential Curbside Plant Materials	25,529	25,173	24,268	25,568	26,483	28,672	2,189	8.3%
SUBTOTAL - Disposed	44,341	41,313	39,586	39,002	37,364	37,857	493	1.3%
SUBTOTAL - Diverted	44,785	44,202	42,270	43,188	41,857	44,457	2,600	6.2%
San Carlos Transfer Station								
Self-Haul Transfer Station	38,574	38,196	31,217	25,166	22,092	9,210	(12,882)	-58.3%
JPA City Vehicles Transfer Station	595	636	494	505	558	447	(112)	-20.0%
Roll-off (Non-Franchised) Waste Transfer Station	6,504	5,916	2,773	2,629	2,710	1,957	(753)	-27.8%
Commercial Other	1,051	2,003	2,465	1,704	1,769	217	(1,553)	-87.8%
Transfer Station Diversion	10,251	11,910	13,892	15,943	13,290	19,060	5,770	43.4%
JPA Diversion	1,337	1,742	1,495	1,476	1,078	1,078	(1)	-0.1%
Self-Haul Plant Materials	11,401	7,443	9,381	8,980	5,084	6,410	1,326	26.1%
SUBTOTAL - Disposed	46,724	46,751	36,948	30,004	27,130	11,831	(15,299)	-56.4%
SUBTOTAL - Diverted	22,989	21,095	24,768	26,400	19,451	26,547	7,096	36.5%
COMMERCIAL RECYCLING RATE	22.2%	23.2%	22.3%	21.7%	24.1%	24.5%		
RES'L YARDWASTE & RECYCLING RATE	50.2%	51.7%	51.6%	52.5%	52.8%	54.0%		
TRANSFER STATION DIVERSION RATE	33.0%	31.1%	40.1%	46.8%	41.8%	69.2%		
TOTAL DISPOSED	172,557	164,772	151,848	143,475	132,174	116,524		
TOTAL DIVERTED	91,010	88,433	88,680	90,203	82,845	92,728		
TOTAL DIVERSION RATE	34.5%	34.9%	36.9%	38.6%	38.5%	44.3%		

Sorter and Bunker Diversion

	Apr-10	May-10	Jun-10	Total
Household Batteries	-	-	-	-
Recyclery BUY BACK - Recycleables	119.94	135.13	146.53	401.59
Tires - Outbound Tires	-	11.15	-	11.15
Metals - Sims Metals	51.44	100.12	98.52	250.08
Refrig. / Large Appliances / Waterheaters to JACO	9.63	5.33	8.41	23.37
<u>E Recycling</u>	<u>27.74</u>	<u>26.40</u>	<u>24.46</u>	<u>78.60</u>
Subtotal Various	208.75	278.13	277.92	764.79
Green Waste and Wood - SBWMA Vehicles	37.37	21.69	35.44	94.50
Aggregates - self haul	182.10	121.07	249.72	552.89
<u>Aggregates - SBWMA Vehicles</u>	<u>73.58</u>	<u>63.12</u>	<u>69.92</u>	<u>206.62</u>
Aggregates - Outbound	255.68	184.19	319.64	759.51
C&D Diversion - Zanker Road	2,630.63	3,118.58	3,221.43	8,970.64
Mattress- Outbound	-	-	-	-
<u>Carpet Foam Padding - Outbound</u>	<u>-</u>	<u>-</u>	<u>-</u>	<u>-</u>
Total - Outbound	-	-	-	-
Sorter Diversion (w/o SBWMA Vehicles)	3,021.48	3,517.78	3,749.06	10,288.32
Total Diversion (w/ SBWMA Vehicles)	3,132.43	3,602.59	3,854.43	10,589.44

Percent of Total Monthly Tons

		Allocated Tons of Total C&D Material			
Monthly Diversion Rates:		77.88%	83.23%	81.52%	80.88%
Total Monthly Tons:		2,630.63	3,118.58	3,221.43	8,970.64
Calculated Monthly Diversion:		2,048.82	2,595.49	2,626.17	

**C&D Distribution
YDS of C&D Sort Material**

	Apr-10	May-10	Jun-10	Apr-10	May-10	Jun-10	Apr-10	May-10	Jun-10	Total
1 Atherton	61.00	126.50	111.00	2.13%	3.96%	2.81%	56.15	123.57	90.39	270.11
2 Belmont	173.00	136.00	171.00	6.05%	4.26%	4.32%	159.24	132.85	139.25	431.34
3 Brisbane	1.00	2.00	9.00	0.03%	0.06%	0.23%	0.92	1.95	7.33	10.20
4 Burlingame	94.00	114.00	88.00	3.29%	3.57%	2.22%	86.52	111.36	71.66	269.54
5 Colma	-	-	-	0.00%	0.00%	0.00%	-	-	-	-
6 Cupertino	18.50	-	-	0.65%	0.00%	0.00%	17.03	-	-	17.03
7 Daly City	19.00	13.50	37.50	0.66%	0.42%	0.95%	17.49	13.19	30.54	61.21
8 East Palo Alto	10.50	19.00	34.50	0.37%	0.60%	0.87%	9.66	18.56	28.09	56.32
9 Foster City	116.50	108.00	200.00	4.08%	3.38%	5.06%	107.23	105.50	162.86	375.59
10 Half Moon Bay	2.50	1.00	-	0.09%	0.03%	0.00%	2.30	0.98	-	3.28
11 Hayward	3.00	22.00	1.00	0.10%	0.69%	0.03%	2.76	21.49	0.81	25.07
12 Hillsborough	63.00	89.00	177.00	2.20%	2.79%	4.47%	57.99	86.94	144.13	289.06
13 Los Altos	63.50	40.00	31.00	2.22%	1.25%	0.78%	58.45	39.07	25.24	122.77
14 Los Altos Hills	12.50	8.00	14.00	0.44%	0.25%	0.35%	11.51	7.81	11.40	30.72
15 Menlo Park	193.50	272.50	602.50	6.77%	8.54%	15.23%	178.11	266.19	490.62	934.92
16 Millbrae	8.00	13.50	57.50	0.28%	0.42%	1.45%	7.36	13.19	46.82	67.37
17 Mountain View	1.00	4.50	10.00	0.03%	0.14%	0.25%	0.92	4.40	8.14	13.46
18 Oakland	-	-	-	0.00%	0.00%	0.00%	-	-	-	-
19 Out of County	4.50	10.50	11.50	0.16%	0.33%	0.29%	4.14	10.26	9.36	23.76
20 Pacifica	1.00	2.00	-	0.03%	0.06%	0.00%	0.92	1.95	-	2.87
21 Palo Alto	233.00	261.50	227.50	8.15%	8.19%	5.75%	214.46	255.45	185.26	655.17
22 Portola Valley	49.00	38.00	74.50	1.71%	1.19%	1.88%	45.10	37.12	60.67	142.89
23 Redwood City	660.00	762.00	856.50	23.09%	23.87%	21.65%	607.49	744.36	697.46	2,049.31
24 San Bruno	-	-	5.00	0.00%	0.00%	0.13%	-	-	4.07	4.07
25 San Carlos	490.50	533.50	627.00	17.16%	16.71%	15.85%	451.48	521.15	510.58	1,483.20
26 San Francisco	94.50	35.50	36.00	3.31%	1.11%	0.91%	86.98	34.68	29.32	150.98
27 San Francisco Airport	-	-	-	0.00%	0.00%	0.00%	-	-	-	-
28 San Jose	3.00	5.50	15.50	0.10%	0.17%	0.39%	2.76	5.37	12.62	20.76
29 San Mateo	418.50	457.50	435.50	14.64%	14.33%	11.01%	385.21	446.91	354.63	1,186.75
30 Santa Clara	4.50	-	2.00	0.16%	0.00%	0.05%	4.14	-	1.63	5.77
31 Santa Cruz	-	-	-	0.00%	0.00%	0.00%	-	-	-	-
32 South San Francisco	2.50	-	9.00	0.09%	0.00%	0.23%	2.30	-	7.33	9.63
33 Sunnyvale	28.50	19.00	19.50	1.00%	0.60%	0.49%	26.23	18.56	15.88	60.67
34 Unincorporated SM County	-	2.50	2.50	0.00%	0.08%	0.06%	-	2.44	2.04	4.48
35 Woodside	25.50	95.50	87.50	0.89%	2.99%	2.21%	23.47	93.29	71.25	188.01
36 Berkeley	-	-	-	0.00%	0.00%	0.00%	-	-	-	-
37 San Rafael	-	-	-	0.00%	0.00%	0.00%	-	-	-	-
38 Richmond	-	-	-	0.00%	0.00%	0.00%	-	-	-	-
39 Fremont	2.50	-	2.50	0.09%	0.00%	0.06%	2.30	-	2.04	4.34
40 Union City	-	-	-	0.00%	0.00%	0.00%	-	-	-	-
41 Santa Rosa	-	-	-	0.00%	0.00%	0.00%	-	-	-	-
42 San Leandro	-	-	-	0.00%	0.00%	0.00%	-	-	-	-
43 Marin County	-	-	-	0.00%	0.00%	0.00%	-	-	-	-
44 Saratoga	-	-	-	0.00%	0.00%	0.00%	-	-	-	-
45 Campbell	-	-	-	0.00%	0.00%	0.00%	-	-	-	-
TOTALS	2,858.00	3,192.50	3,956.00	100.00%	100.00%	100.00%	2630.63	3118.58	3221.43	8970.64

2010 - Q2 RESIDENTIAL RECYCLING PARTICIPATION BY JURISDICTION 08.15.10

CUMULATIVE TONS

Number of Months: 6

	ATH	BEL	BURL	EPA	FC	HILLS	MP	RWC	SC	SM	FO	UNIN	WBSD	TOTAL
CURBSIDE RECYCLING														
Q2 2009														
Recycling Tons Diverted	564	1,126	1,204	360	1,089	800	1,421	2,439	1,598	3,071	303	972	420	15,365
Number of Homes	2,319	6,544	6,419	4,145	6,464	3,611	7,695	16,967	8,348	19,187	2,544	4,930	2,064	91,237
Pounds/Hhld/Month	81.1	57.3	62.5	29.0	56.1	73.8	61.5	47.9	63.8	53.4	39.6	65.7	67.8	56.1
Q2 2010														
Recycling Tons Diverted	537	1,178	1,285	350	1,178	801	1,453	2,605	1,577	3,106	306	962	442	15,780
Number of Homes	2,316	6,527	6,339	4,137	6,495	3,600	7,734	16,990	8,340	19,053	2,543	4,876	2,076	91,026
Pounds/Hhld/Month	77.2	60.2	67.6	28.2	60.5	74.2	62.6	51.1	63.0	54.3	40.1	65.8	71.0	57.8
PLANT MATERIAL														
Q2 2009														
Recycling Tons Diverted	2,410	1,455	1,525	1,333	912	1,364	3,149	4,037	2,474	4,808	830	1,412	741	26,450
Number of Homes	2,319	6,544	6,419	4,145	6,464	3,611	7,695	16,967	8,348	19,187	2,544	4,930	2,064	91,237
Pounds/Hhld/Month	346.4	74.1	79.2	107.2	47.0	125.9	136.4	79.3	98.8	83.5	108.7	95.5	119.7	96.6
Q2 2010														
Recycling Tons Diverted	2,617	1,684	1,701	1,517	1,064	1,408	3,231	4,310	2,818	5,165	832	1,497	829	28,672
Number of Homes	2,316	6,527	6,339	4,137	6,495	3,600	7,734	16,990	8,340	19,053	2,543	4,876	2,076	91,026
Pounds/Hhld/Month	376.6	86.0	89.4	122.2	54.6	130.4	139.3	84.6	112.6	90.4	109.1	102.4	133.1	105.0

Note:

Number of Homes includes single family homes and multi-family complexes with 4 or fewer units.

**2010 - Q2 COMMERCIAL RECYCLING PARTICIPATION BY
JURISDICTION 08.15.10**

<u>JURISDICTION</u>	<u>TOTAL REFUSE CUSTOMERS</u>	<u>TOTAL RECYCLING CUSTOMERS</u>	<u>TOTAL ORGANICS CUSTOMERS*</u>
Atherton	39	20	11
Belmont	432	345	35
Burlingame	1,370	1,103	85
East Palo Alto	222	167	12
Foster City	230	215	53
Hillsborough	13	13	9
Menlo Park	1,120	855	128
Redwood City	1,857	1,231	165
San Carlos	1,118	908	66
San Mateo	2,276	1,648	128
North Fair Oaks	476	279	26
Unincorporated	109	81	10
West Bay Sanitary District	29	29	8
TOTAL	9,291	6,894	736

* Included in "Total Recycling Customers"

Allied Waste
2010 – Q2: Commercial Recycling Program
08 15 10

Commercial Recycling Waste Diversion: In Q2 2010, Allied Waste's Recycling Coordinators continued technical assistance to large waste generators; on-site recycling and composting training; prospecting for new and expanded recycling and organics services; and providing waste diversion support for Member Agency community events. In addition, specific attention was paid to assisting the waste diversion needs of the largest waste generators of 2009, as well as to establishing and supporting waste diversion efforts at the facilities of the Member Agencies. Following December's reduction in staff, Allied Waste's Recycling Coordinators quickly adjusted, to meet the needs of established customers and new prospects in their newly-defined territories.

Commercial Organics Program: Allied Waste's Recycling Coordinators continued to successfully prospect and close new and expanded organics programs during Q2 2010. The net total of new organics participants in Q2 is nine.

Staffing: Staffing remained constant in Q2. Near quarter's end, it was determined that Recology would assume responsibility for the Recycling Coordinator Staff. The Recycling Manager left the company in late May, the staff of Recycling Coordinators were given offers for employment by Recology effective July 1, 2010, and were essentially terminated by Allied on June 30, 2010.

2010 - Q2 School Tours & Special Events 8.15.10

School Tours

Tours were discontinued due to the razing of The Recyclery at 333 Shoreway Road. Ensuing demolition and relocation of the recycling operation to the 225 Shoreway Road site resulted in safety concerns.

Special Events

Date	Event	City	Date	Event	City
4/16-18	Fine Arts Sidewalk Festival	Menlo Park	5/21-22	Hometown Days	San Carlos
4/17	Earth Day Clean Up Shorebird Sanctuary	Burlingame	5/22	McKinley School Flea Market	Burlingame
4/22	SMCo Health System Retreat	Atherton	5/22	Ombudsman Services Benefit - The Grape Escape, A Culinary Cap	SMCo
4/22	Belmont/Redwood Shores Youth Softball BBQ	Belmont	5/22-23	Maker Faire	San Mateo
4/22	Earth Night at Highlands Elementary School	SMCo	5/23	Family Fun Day	Hillsborough
4/23	Rebuilding Together - 3 Projects	East Palo Alto	5/23	Mavericks Swim Team Sprintorama	San Mateo
4/23	Rebuilding Together - 1 Project	Menlo Park	5/25	Burlingame Aquatic Club Long Course Swim Meet	Burlingame
4/23	Rebuilding Together - 3 Projects	Redwood City	5/25	Roy Cloud Elementary Jog-a-Thin	Redwood City
4/23	Rebuilding Together - 3 Projects	San Mateo	5/29-31	MacPherson Memorial Day Tournamet	San Carlos
4/23	North Shoreview Montessori Earth Walk	San Mateo	May/June	Hot Harvest Nights - 8 Thursdays	San Carlos
4/23-25	St Timothy's School Carnival	San Mateo	June	Central Park Music Series - 2 Thursdays	San Mateo
4/24	Family Service Day	East Palo Alto	6/4	Clifford Elementary Multicultural Festival	Redwood City
4/24	National Rebuilding Day Picnic	Redwood City	6/4-6	St Pius Festival	Redwood City
4/24	San Mateo Boy Scout Troop 44 Paper Drive	San Mateo	6/5-6	Art and Wine Festival	Foster City
4/25	Earth Day Fair	Foster City	6/5-6	Sunset Celebration	Menlo Park
4/30-5/2	Our Lady of Mount Carmel Spring Festival	Redwood City	6/11	Hillview Middle School Graduation	Menlo Park
4/30-5/2	St Gregory's Parish Festival	San Mateo	6/11	Nativity Carnival	Menlo Park
5/1	Burlingame Intermediate School Spring Fling	Burlingame	6/11-13	George Estes Classic	San Mateo
5/1	Chicken's Ball	San Carlos	6/12	San Mateo Boy Scout Troop 44 Paper Drive	San Mateo
5/2	Shinnyo-En Open House	Redwood City	6/12-13	Art in the Park	Burlingame
5/4	East Palo Alto Police Department Building Dedication	East Palo Alto	6/12-13	Aquansports Canoe Race	Foster City
5/8	Notre Dame de Namur University Commencement	Belmont	6/12-22	San Mateo County Fair	San Mateo
5/8	Coyote Point Park Volunteer Coastal Cleanup	San Mateo	6/13	Annual Congregational Church Luncheon	San Mateo
5/12-15	PAL Burlingame HS Swim Meet	Burlingame	6/19	Vertical Challenge	San Carlos
5/15	Firehawks LaCrosse Jamboree	Redwood City	6/23	Menlo Park Block Party	Menlo Park
5/15	Soul Stroll for Health	San Mateo	6/25	Wine Walk	San Mateo
5/16	Green Street Fair	Burlingame	6/27	Criterion Bke Race	Burlingame
5/18	Public Works Week Barbecue	SMCo	Ongoing	Seville House Special Needs Program - Hillsdale High School	San Mateo

JURISDICTION DEMOGRAPHICS - QUARTERLY 2010 - Q2 8.15.10

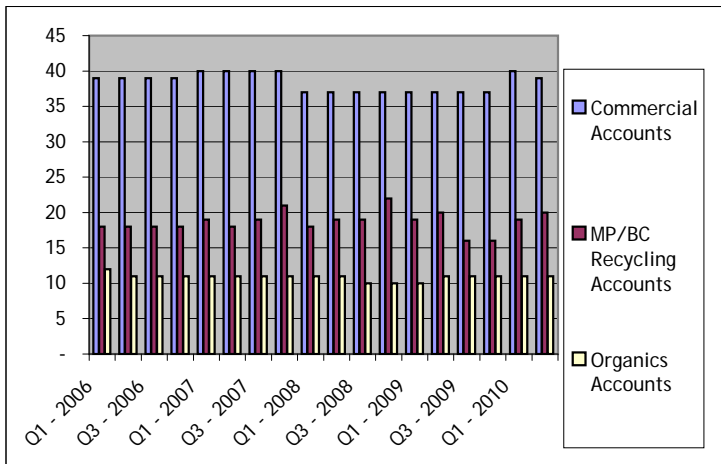
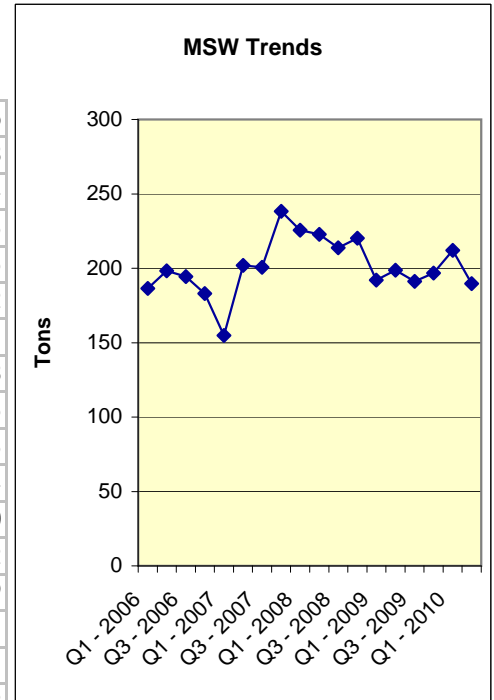


Atherton

Board Member Jerry Gruber, City Manager
 Coordinator Elaine Guster
 Voice 650.596.6467
 Cell 650.670.0687
 Email eguster@republicservices.com

Total Commercial Accounts: 39

	# Commercial Accounts	# MP/BC Recycling Accounts	# Organics Accounts	Total Recycled Tons ¹	Commercial Recycling Percentage ¹	Total MSW Tons ¹
Q1 - 2006	39	18	12	222	54.4%	186
Q2 - 2006	39	18	11	189	48.8%	198
Q3 - 2006	39	18	11	216	52.6%	194
Q4 - 2006	39	18	11	239	50.2%	183
Q1 - 2007	40	19	11	218	58.5%	155
Q2 - 2007	40	18	11	164	44.8%	202
Q3 - 2007	40	19	11	120	37.4%	201
Q4 - 2007	40	21	11	160	40.1%	238
Q1 - 2008	37	18	11	164	42.1%	225
Q2 - 2008	37	19	11	177	44.3%	223
Q3 - 2008	37	19	10	189	46.9%	214
Q4 - 2008	37	22	10	168	43.3%	220
Q1 - 2009	37	19	10	169	46.8%	192
Q2 - 2009	37	20	11	115	36.7%	199
Q3 - 2009	37	16	11	183	48.9%	191
Q4 - 2009	37	16	11	136	40.9%	197
Q1 - 2010	40	19	11	129	37.8%	212
Q2 - 2010	39	20	11	167	45.0%	190



Commentary:

With the event season coming upon us, Allied Waste Recycling Coordinators were hard at work, encouraging event staff to divert as much discarded material as possible. Elaine Guster provided assistance to Jean Cardona at Holbrook Palmer Park to ensure a transparent collection service at the County Health System Retreat.

Special Events: SMCo Health System Retreat

City Commitment to Recycling:

Environmental Programs Committee - Mission:

Educating residents about the environmental issues and

seeking to improve the overall environmental performance of the Town in areas that include reducing waste and pollution, enhancing energy efficiency, reducing our contributions to global warming and increasing our use of alternative energy.

¹ Source is MIS Report

JURISDICTION DEMOGRAPHICS - QUARTERLY
2010 - Q2 8.15.10

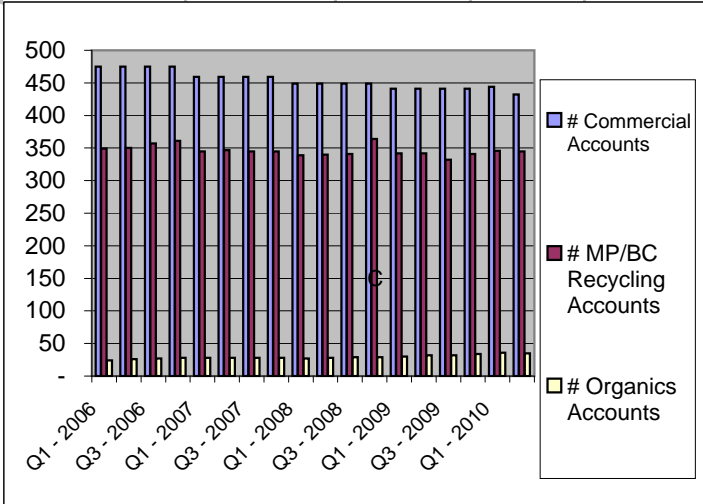
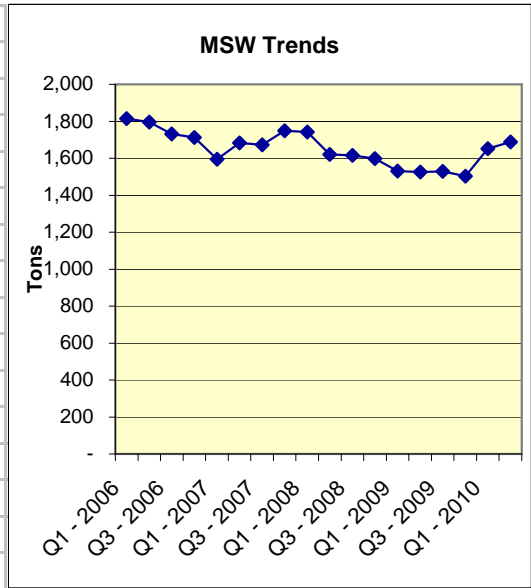


Belmont

Board Member Jack Crist, City Manager
 Coordinator Yvette Madera
 Voice 650.596.6414
 Cell 650.670.0532
 Email ymadera@republicservices.com

Total commercial accounts: 432

	# Commercial Accounts	# MP/BC Recycling Accounts	# Organics Accounts	Total Recycled Tons ¹	Commercial Recycling Percentage ¹	Total MSW Tons ¹
Q1 - 2006	475	349	24	412	19.6%	1,815
Q2 - 2006	475	350	26	389	18.7%	1,796
Q3 - 2006	475	357	27	373	17.9%	1,732
Q4 - 2006	475	361	28	407	15.5%	1,712
Q1 - 2007	459	345	28	414	20.6%	1,595
Q2 - 2007	459	347	28	415	19.8%	1,683
Q3 - 2007	459	345	28	408	19.6%	1,673
Q4 - 2007	459	345	28	386	16.8%	1,748
Q1 - 2008	449	339	27	401	18.7%	1,742
Q2 - 2008	449	340	28	358	18.1%	1,622
Q3 - 2008	449	341	29	398	18.9%	1,615
Q4 - 2008	449	364	29	455	22.2%	1,598
Q1 - 2009	441	342	30	459	23.1%	1,530
Q2 - 2009	441	342	32	408	21.1%	1,525
Q3 - 2009	441	332	32	389	20.3%	1,529
Q4 - 2009	441	341	34	380	20.2%	1,502
Q1 - 2010	444	346	36	382	18.8%	1,651
Q2 - 2010	432	345	35	463	21.5%	1,688



Commentary:

With the event season coming upon us, Allied Waste Recycling Coordinators were hard at work, encouraging event staff to divert as much discarded material as possible. Yvette Madera provided assistance and expertise to Belmont/Redwood Shores Youth Softball, Notre Dame de Namur University, and the staff at Hiller Aviation Museum to ensure successful events with optimum diversion.

Special Events: Belmont/Redwood Shores Youth Softball BBQ, Notre Dame de Namur University Commencement, SMCo Ombudsman Benefit - The Grape Escape - A Culinary Caper

City Commitment to Recycling:

¹ Source is MIS Report

JURISDICTION DEMOGRAPHICS - QUARTERLY

2010 - Q2 8.15.10



Burlingame

Board Member Jesus Nava, Finance Director

Coordinator Elaine Guster

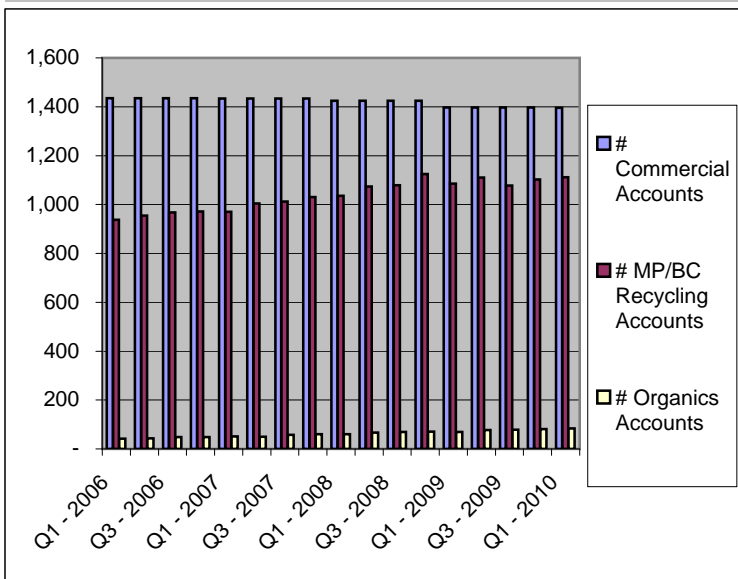
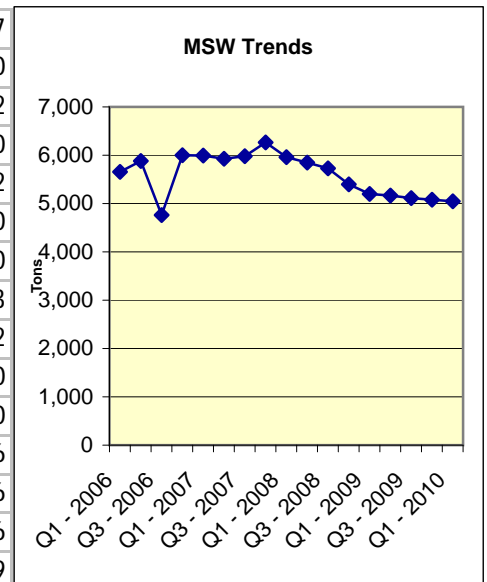
Total commercial accounts: 1,370

Voice 650.596.6467

Cell 650.670.0687

Email eguster@republicservices

	# Commercial Accounts	# MP/BC Recycling Accounts	# Organics Accounts	Total Recycled Tons ¹	Commercial Recycling Percentage ¹	Total MSW Tons ¹
Q1 - 2006	1,435	938	42	1,261	18.2%	5,657
Q2 - 2006	1,435	955	43	1,379	19.0%	5,880
Q3 - 2006	1,435	967	49	1,345	22.0%	4,762
Q4 - 2006	1,435	971	48	1,471	19.7%	6,000
Q1 - 2007	1,434	970	51	1,249	17.3%	5,992
Q2 - 2007	1,434	1,004	50	1,208	16.9%	5,930
Q3 - 2007	1,434	1,012	57	1,280	17.6%	5,980
Q4 - 2007	1,434	1,031	60	1,381	18.0%	6,263
Q1 - 2008	1,425	1,036	60	1,256	17.4%	5,962
Q2 - 2008	1,425	1,073	67	1,166	16.6%	5,850
Q3 - 2008	1,425	1,079	70	1,284	18.3%	5,730
Q4 - 2008	1,425	1,125	71	1,423	20.9%	5,396
Q1 - 2009	1,397	1,085	69	1,336	20.5%	5,196
Q2 - 2009	1,397	1,110	77	1,210	19.0%	5,166
Q3 - 2009	1,397	1,077	79	1,287	20.1%	5,109
Q4 - 2009	1,397	1,103	81	1,520	23.0%	5,077
Q1 - 2010	1,396	1,112	84	1,390	21.6%	5,046
Q2 - 2010	1,370	1,103	85	1,285	19.8%	5,213



Commentary:

With the event season coming upon us, Allied Waste Recycling Coordinators were hard at work, encouraging event staff to divert as much discarded material as possible. Elaine Guster worked with Allied's Customer Service staff to provide excellent collection services at each Burlingame event in Q2.

Special Events: Earth Day Clean Up Shorebird Sanctuary, BIS Spring Fling, Green Street Fair, McKinley School Flea Market, Burlingame Aquatic Club Long Course Swim Meet, Criterium Bike Race, Art in the Park, PAL BHS Swim Meet

City Commitment to Recycling:
Green Ribbon Task Force

¹ Source is MIS Report

JURISDICTION DEMOGRAPHICS - QUARTERLY
2010 - Q2 8.15.10

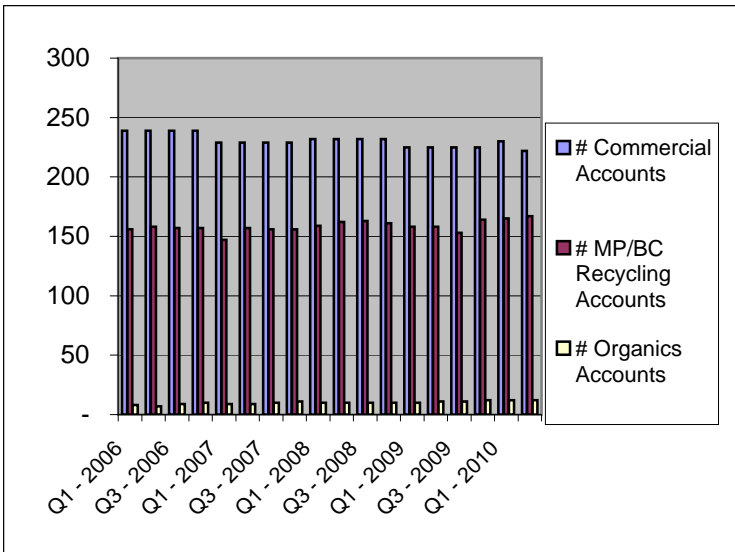
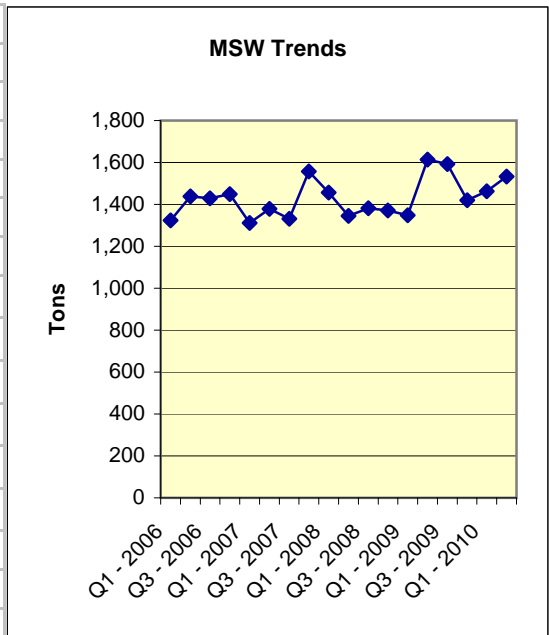


East Palo Alto

Board Member Alvin D James, City Manager
 Coordinator Gary Cheso
 Voice 650.596.6465
 Cell 650.670.0664
 Email gcheso2@republicservices.com

Total commercial accounts: 222

	# Commercial Accounts	# MP/BC Recycling Accounts	# Organics Accounts	Total Recycled Tons ¹	Commercial Recycling Percentage ¹	Total MSW Tons ¹
Q1 - 2006	239	156	8	190	12.5%	1,324
Q2 - 2006	239	158	7	107	6.9%	1,439
Q3 - 2006	239	157	9	114	7.4%	1,429
Q4 - 2006	239	157	10	104	6.7%	1,448
Q1 - 2007	229	147	9	194	12.9%	1,311
Q2 - 2007	229	157	9	187	11.9%	1,379
Q3 - 2007	229	156	10	208	13.5%	1,331
Q4 - 2007	229	156	11	223	12.5%	1,558
Q1 - 2008	232	159	10	209	12.5%	1,457
Q2 - 2008	232	162	10	208	13.4%	1,345
Q3 - 2008	232	163	10	249	15.3%	1,382
Q4 - 2008	232	161	10	270	16.4%	1,371
Q1 - 2009	225	158	10	218	14.0%	1,348
Q2 - 2009	225	158	11	205	11.3%	1,614
Q3 - 2009	225	153	11	217	12.0%	1,592
Q4 - 2009	225	164	12	192	11.9%	1,420
Q1 - 2010	230	165	12	219	13.0%	1,463
Q2 - 2010	222	167	12	238	13.4%	1,533



Commentary:

With the event season coming upon us, Allied Waste Recycling Coordinators were hard at work, encouraging event staff to divert as much discarded material as possible. Allied Waste Recycling Coordinators and staff worked to make East Palo Alto's special events especially green.

Special Events: Family Service Day, EPAPD Building Dedication

City Commitment to Recycling:

¹ Source is MIS Report

JURISDICTION DEMOGRAPHICS - QUARTERLY
2010 - Q2 8.15.10



Foster City

Board Member **Jim Hardy, City Manager**

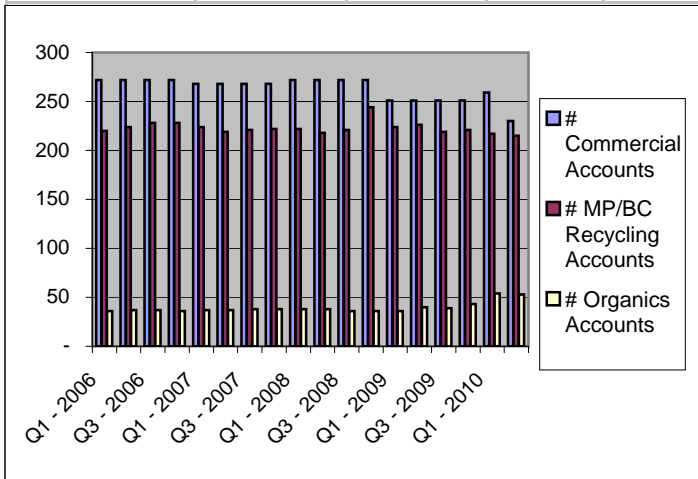
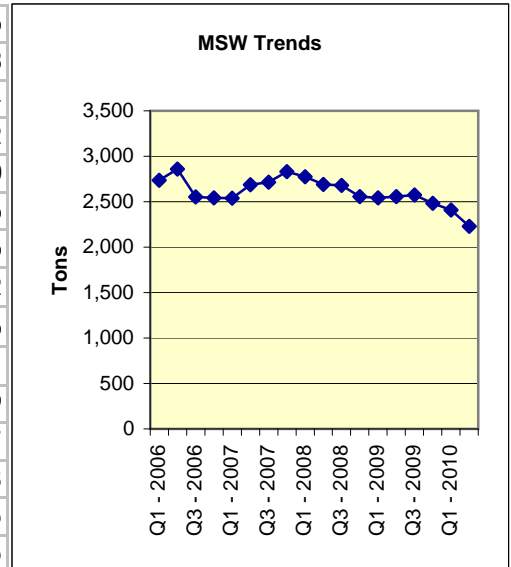
Coordinator **Sandra Tinoco** Total commercial accounts: 230

Voice 650.596.6459

Cell 650.670.0667

Email stinoco@republicservices.com

	# Commercial Accounts	# MP/BC Recycling Accounts	# Organics Accounts	Total Recycled Tons ¹	Commercial Recycling Percentage ¹	Total MSW Tons ¹
Q1 - 2006	272	220	36	652	19.2%	2,736
Q2 - 2006	272	224	37	770	21.2%	2,858
Q3 - 2006	272	228	37	566	18.1%	2,554
Q4 - 2006	272	228	36	762	23.1%	2,542
Q1 - 2007	268	224	37	766	23.2%	2,540
Q2 - 2007	268	219	37	792	22.8%	2,686
Q3 - 2007	268	221	38	688	20.2%	2,716
Q4 - 2007	268	222	38	735	20.4%	2,832
Q1 - 2008	272	222	38	667	19.4%	2,776
Q2 - 2008	272	218	38	685	20.3%	2,691
Q3 - 2008	272	221	36	726	21.3%	2,679
Q4 - 2008	272	244	36	754	22.8%	2,557
Q1 - 2009	251	224	36	729	22.3%	2,543
Q2 - 2009	251	226	40	725	22.1%	2,555
Q3 - 2009	251	219	39	712	21.7%	2,575
Q4 - 2009	251	221	43	709	22.2%	2,481
Q1 - 2010	259	217	54	664	21.6%	2,407
Q2 - 2010	230	215	53	795	26.3%	2,231



Commentary:

With the event season coming upon us, Allied Waste Recycling Coordinators were hard at work, encouraging event staff to divert as much discarded material as possible. Sandra Tinoco & Gary Cheso worked to make activities in Foster City green.

Special Events: Art & Wine Festival, Earth Day Fair, Aquansports Canoe Races

City Commitment to Recycling:

Laura Galli, Assistant Engineer

¹ Source is MIS Report

JURISDICTION DEMOGRAPHICS - QUARTERLY 2010 - Q2 8.15.10



Hillsborough

Board Member Martha DeBry, Public Works Director

Coordinator Elaine Guster

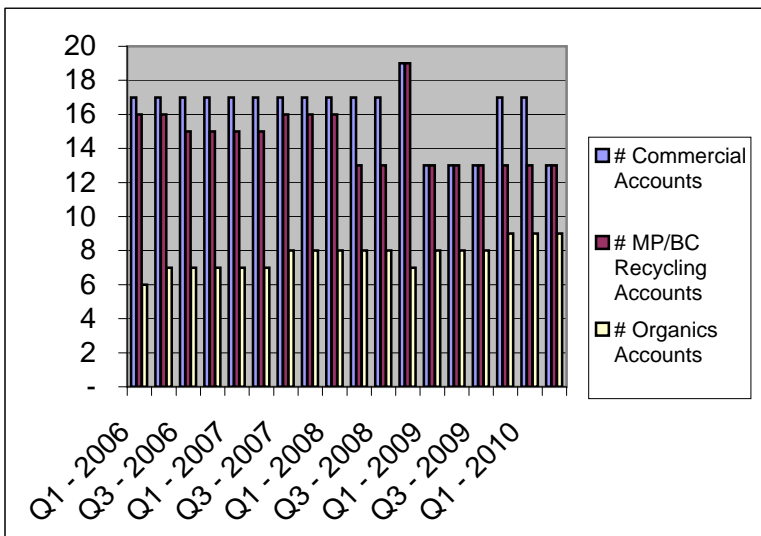
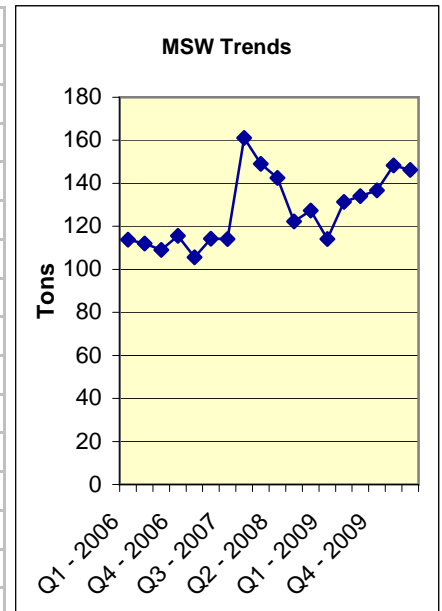
Total commercial accounts: 13

Voice 650.596.6467

Cell 650.670.0687

Email eguster@republicservices.com

	# Commercial Accounts	# MP/BC Recycling Accounts	# Organics Accounts	Total Recycled Tons ¹	Commercial Recycling Percentage ¹	Total MSW Tons ¹
Q1 - 2006	17	16	6	151	57.0%	114
Q2 - 2006	17	16	7	163	59.2%	112
Q3 - 2006	17	15	7	175	61.6%	109
Q4 - 2006	17	15	7	161	58.1%	116
Q1 - 2007	17	15	7	125	54.2%	106
Q2 - 2007	17	15	7	160	58.4%	114
Q3 - 2007	17	16	8	159	58.2%	114
Q4 - 2007	17	16	8	127	44.0%	161
Q1 - 2008	17	16	8	122	45.1%	149
Q2 - 2008	17	13	8	135	48.6%	142
Q3 - 2008	17	13	8	169	58.0%	122
Q4 - 2008	19	19	7	168	56.9%	127
Q1 - 2009	13	13	8	140	55.1%	114
Q2 - 2009	13	13	8	137	51.0%	131
Q3 - 2009	13	13	8	144	51.8%	134
Q4 - 2009	17	13	9	154	53.0%	137
Q1 - 2010	17	13	9	119	44.5%	148
Q2 - 2010	13	13	9	134	47.8%	146



Commentary:

With the event season coming upon us, Allied Waste Recycling Coordinators were hard at work, encouraging event staff to divert as much discarded material as possible. Elaine Guster worked to make Family Fun Day a diversion fun day!

Special Events: Family Fun Day

Town Commitment to Recycling:

Town of Hillsborough employs a Recycling Specialist

¹ Source is MIS Report

JURISDICTION DEMOGRAPHICS - QUARTERLY
2010 - Q2 8.15.10



Menlo Park

Board Member Kent Steffens, Public Works Director

Coordinator Elaine Guster

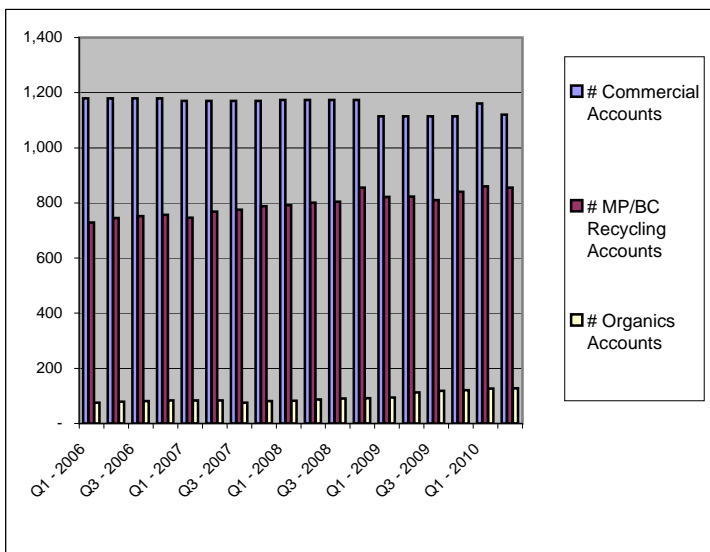
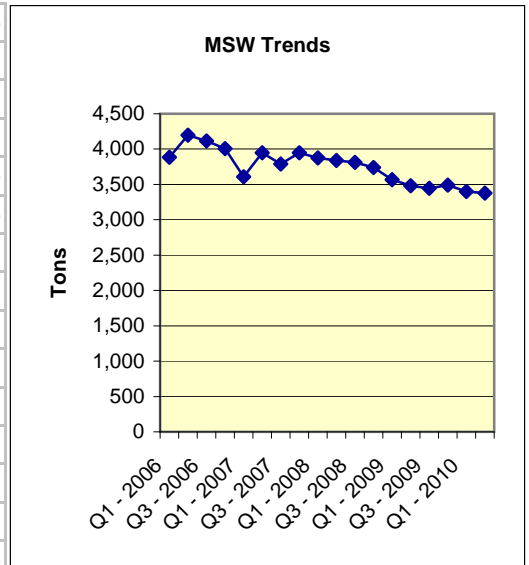
Total commercial accounts: 1,120

Voice 650.596.6467

Cell 650.670.0687

Email eguster@republicservices.com

	# Commercial Accounts	# MP/BC Recycling Accounts	# Organics Accounts	Total Recycled Tons ¹	Commercial Recycling Percentage ¹	Total MSW Tons ¹
Q1 - 2006	1,180	729	75	2,185	36.0%	3,886
Q2 - 2006	1,180	745	79	2,056	32.9%	4,199
Q3 - 2006	1,180	752	81	2,079	33.6%	4,117
Q4 - 2006	1,180	757	84	2,199	35.4%	4,007
Q1 - 2007	1,170	747	84	1,955	35.2%	3,606
Q2 - 2007	1,170	768	84	1,860	32.0%	3,946
Q3 - 2007	1,170	775	76	1,718	31.2%	3,789
Q4 - 2007	1,170	788	81	1,931	32.8%	3,947
Q1 - 2008	1,174	792	83	1,855	32.4%	3,877
Q2 - 2008	1,174	801	87	1,577	29.1%	3,841
Q3 - 2008	1,174	805	90	1,689	30.7%	3,813
Q4 - 2008	1,174	856	92	1,899	33.7%	3,741
Q1 - 2009	1,114	822	94	1,630	31.4%	3,568
Q2 - 2009	1,114	823	113	1,546	30.7%	3,481
Q3 - 2009	1,114	810	118	1,528	30.7%	3,446
Q4 - 2009	1,114	840	121	1,970	36.1%	3,492
Q1 - 2010	1,161	860	127	1,828	35.0%	3,400
Q2 - 2010	1,120	855	128	1,563	31.6%	3,375



Commentary:

With the event season coming upon us, Allied Waste Recycling Coordinators were hard at work, encouraging event staff to divert as much discarded material as possible. Elaine Guster worked closely with Tony Soria to ensure that all his collection needs were covered for the **Annual Sunset Celebration**. Additionally, she worked with the Customer Service staff, as well as Regina Wheeler, to guarantee maximum diversion at City events.

Special Events: Fine Arts Sidewalk Festival, Sunset Celebration, Rebuilding Together, Hillview School Graduation, Nativity Carnival, Menlo Park Block Party,

City Commitment to Recycling:

Organized Environmental Program with full time Recycling Coordinator, along with an Environmental Quality Commission consisting of seven community volunteers.

Menlo Park's Green Ribbon Citizen's Committee can be accessed online at: www.menlogreen.typepad.com

¹ Source is MIS Report

JURISDICTION DEMOGRAPHICS - QUARTERLY 2010 - Q2 8.15.10



Redwood City

Board Member **Brian Ponty, Finance Director**

Coordinator **Gary Cheso**

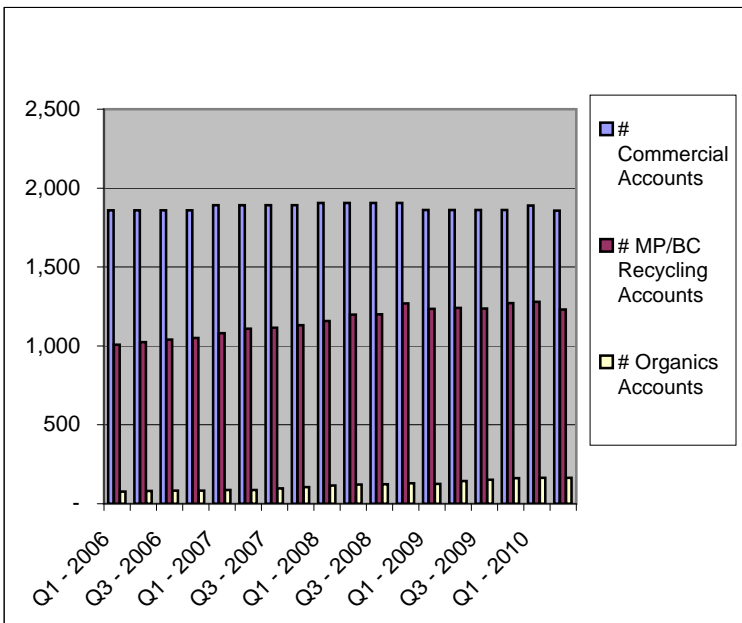
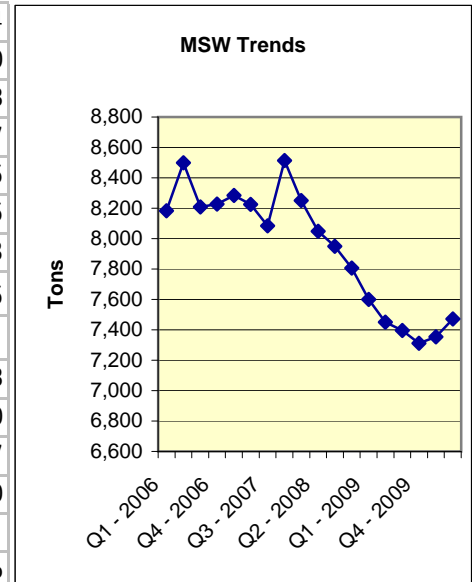
Total commercial accounts 1,857

Voice 650.596.6465

Cell 650.670.0664

Email gcheso2@republicservices.com

	# Commercial Accounts	# MP/BC Recycling Accounts	# Organics Accounts	Total Recycled Tons ¹	Commercial Recycling Percentage ¹	Total MSW Tons ¹
Q1 - 2006	1,860	1,007	78	1,951	19.2%	8,184
Q2 - 2006	1,860	1,024	81	2,126	20.0%	8,500
Q3 - 2006	1,860	1,041	84	2,021	19.8%	8,208
Q4 - 2006	1,860	1,050	83	2,284	21.7%	8,227
Q1 - 2007	1,891	1,081	87	1,864	18.4%	8,285
Q2 - 2007	1,891	1,110	87	1,875	18.6%	8,225
Q3 - 2007	1,891	1,116	98	1,921	19.2%	8,083
Q4 - 2007	1,891	1,131	106	2,236	20.8%	8,515
Q1 - 2008	1,906	1,157	116	2,078	20.1%	8,251
Q2 - 2008	1,906	1,199	122	2,119	20.8%	8,048
Q3 - 2008	1,906	1,201	124	2,180	21.5%	7,950
Q4 - 2008	1,906	1,269	129	2,454	23.9%	7,807
Q1 - 2009	1,862	1,235	126	2,231	22.7%	7,600
Q2 - 2009	1,862	1,240	144	2,109	22.1%	7,451
Q3 - 2009	1,862	1,237	152	2,057	21.8%	7,396
Q4 - 2009	1,862	1,271	163	2,334	24.2%	7,312
Q1 - 2010	1,890	1,279	165	2,252	23.4%	7,353
Q2 - 2010	1,857	1,231	165	2,274	23.3%	7,471



Commentary:

With the event season coming upon us, Allied Waste Recycling Coordinators were hard at work, encouraging event staff to divert as much discarded material as possible. With more than eight events in Redwood City, Gary Cheso was on his toes working with event organizers and school staff, ensuring all of our customers' collection needs were met and exceeded.

Special Events: St Pius Festival, Rebuilding Together, National Rebuilding Day Picnic, Shinnyo-En Open House, Firehawks LaCrosse Jamboree, Roy Cloud School Jog-a-Thin, Clifford School Multicultural Festival, Our Lady of Mount Carmel Spring Festival

City Commitment to Recycling:

Redwood City has a Pride & Beautification Committee.

¹ Source is MIS Report

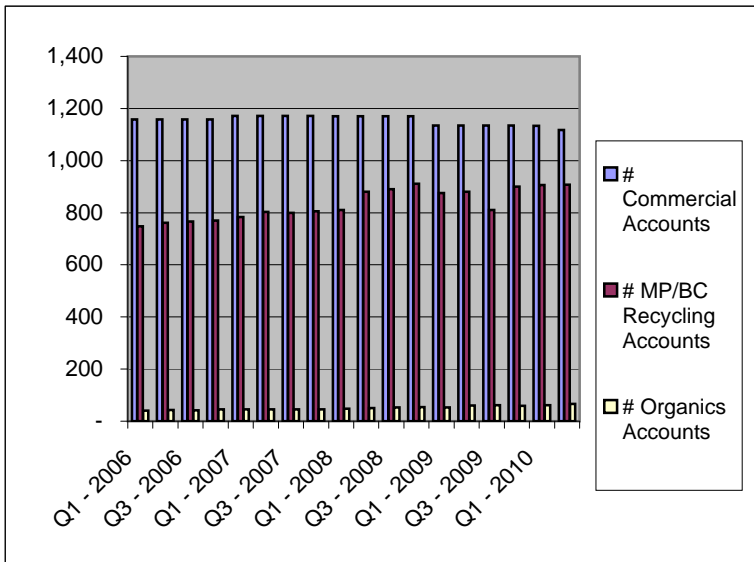
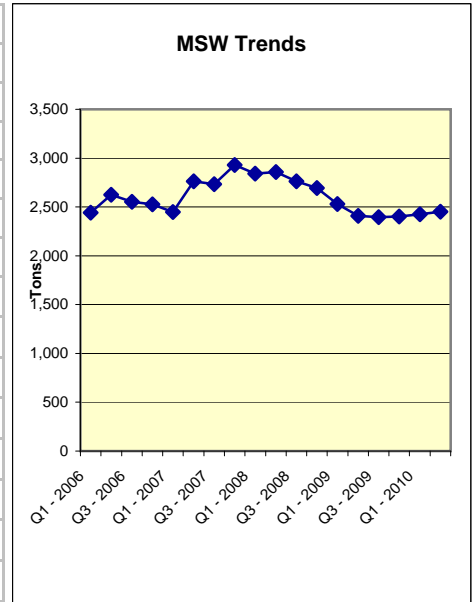
JURISDICTION DEMOGRAPHICS - QUARTERLY
2010 - Q2 8.15.10



San Carlos

Board Member **Brian Moura, Assistant City Manager**
 Coordinator **Yvette Madera** Total commercial accounts 1,118
 Voice **650.596.6414**
 Cell **650.670.0532**
 Email ymadera@republicservices.com

	# Commercial Accounts	# MP/BC Recycling Accounts	# Organics Accounts	Total Recycled Tons ¹	Commercial Recycling Percentage ¹	Total MSW Tons ¹
Q1 - 2006	1,158	748	41	1,087	30.8%	2,441
Q2 - 2006	1,158	761	43	1,072	29.0%	2,623
Q3 - 2006	1,158	766	42	998	28.1%	2,554
Q4 - 2006	1,158	770	46	1,097	30.3%	2,527
Q1 - 2007	1,171	783	45	1,045	29.9%	2,447
Q2 - 2007	1,171	803	45	1,031	27.2%	2,763
Q3 - 2007	1,171	800	45	883	24.4%	2,734
Q4 - 2007	1,171	806	45	709	19.5%	2,930
Q1 - 2008	1,170	810	48	784	21.6%	2,840
Q2 - 2008	1,170	880	50	715	20.0%	2,856
Q3 - 2008	1,170	890	53	743	21.2%	2,764
Q4 - 2008	1,170	911	54	755	21.9%	2,695
Q1 - 2009	1,135	876	53	748	22.8%	2,530
Q2 - 2009	1,135	881	60	802	25.0%	2,410
Q3 - 2009	1,135	810	62	703	22.7%	2,395
Q4 - 2009	1,135	900	59	757	24.0%	2,403
Q1 - 2010	1,134	906	62	712	22.7%	2,426
Q2 - 2010	1,118	908	66	668	21.4%	2,450



Commentary:

With the event season coming upon us, Allied Waste Recycling Coordinators were hard at work, encouraging event staff to divert as much discarded material as possible. Yvette Madera was kept busy ensuring collection needs were met, booths were staffed, participants were well versed in disposal procedure, all of our San Carlos events were successful.

Special Events: McPherson Memorial Day Tournament, Chicken's Ball, Vertical Challenge, Hometown Days, Hot Harvest Nights

City Commitment to Recycling:

San Carlos Green (task force) website is up, www.sancarlosgreen.org.

¹ Source is MIS Report

JURISDICTION DEMOGRAPHICS - QUARTERLY

2010 - Q2 8.15.10



San Mateo

Board Member **Larry Patterson, Public Works Director**

Coordinator **Sandra Tinoco**

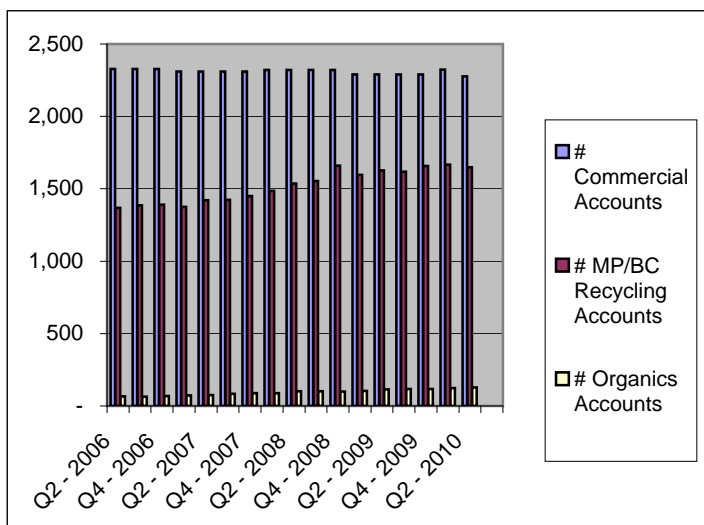
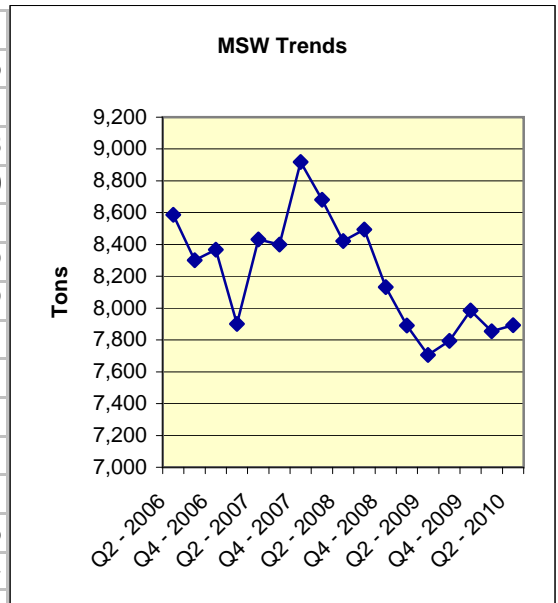
Total commercial accounts **2,276**

Voice **650.596.6459**

Cell **650.670.0667**

Email stinoco@republicservices.com

	# Commercial Accounts	# MP/BC Recycling Accounts	# Organics Accounts	Total Recycled Tons ¹	Commercial Recycling Percentage ¹	Total MSW Tons ¹
Q1 - 2006	2,328	1,345	65	2,634	23.8%	8,452
Q2 - 2006	2,328	1,368	67	2,816	24.7%	8,586
Q3 - 2006	2,328	1,387	65	2,560	23.6%	8,301
Q4 - 2006	2,328	1,391	69	2,686	24.3%	8,368
Q1 - 2007	2,311	1,374	73	2,495	24.0%	7,900
Q2 - 2007	2,311	1,421	76	2,551	23.2%	8,432
Q3 - 2007	2,311	1,423	84	2,463	22.7%	8,399
Q4 - 2007	2,311	1,451	88	2,738	23.4%	8,919
Q1 - 2008	2,320	1,485	89	2,513	22.5%	8,681
Q2 - 2008	2,320	1,537	102	2,392	22.1%	8,421
Q3 - 2008	2,320	1,553	101	2,654	23.8%	8,493
Q4 - 2008	2,320	1,659	100	2,898	26.3%	8,133
Q1 - 2009	2,291	1,597	104	2,804	26.2%	7,891
Q2 - 2009	2,291	1,627	115	2,564	25.0%	7,706
Q3 - 2009	2,291	1,619	118	2,528	24.5%	7,794
Q4 - 2009	2,291	1,657	118	2,623	24.7%	7,986
Q1 - 2010	2,323	1,666	123	2,696	25.6%	7,855
Q2 - 2010	2,276	1,648	128	2,644	25.1%	7,894



1 Source is MIS Report

City Commitment to Recycling: Full time Recycling Programs Coordinator, **Roxanne Murray**

Commentary:

With the event season coming upon us, Allied Waste Recycling Coordinators were hard at work, encouraging event staff to divert as much discarded material as possible. The City of San Mateo hosted a whopping minimum of 15 events in Q2. Sandra Tinoco had her hands full assisting event organizers, Event Center staff, and community members with large and small events. Education, right-sizing containers, providing adequate collection were all elements Sandra brought to ensure success in the City of San Mateo.

Special Events: Rebuilding Together, North Shoreview Montessori Earth Walk, Boy Scout Troop #44 Paper Drive, Coyote Point Park Volunteer Coastal Cleanup, Soul Stroll for Health, Mavericks Swim Team Sprintorama, Congregational Church Annual Luncheon, Wine Walk, George Estes Classic, San Mateo County Fair, Maker Faire, St Timothy Carnival, St Gregory Parish Festival, Central Park Music Series, Seville House Special Needs Program-Hillsdale HS

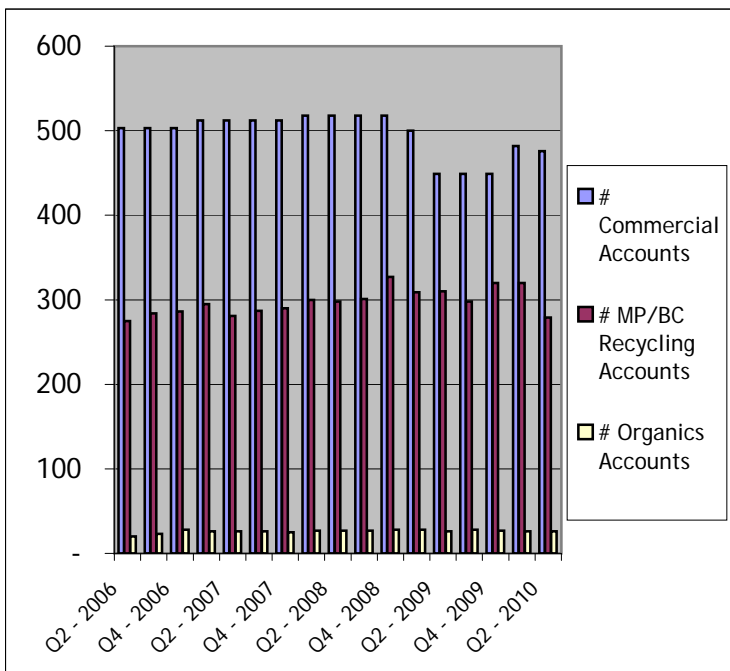
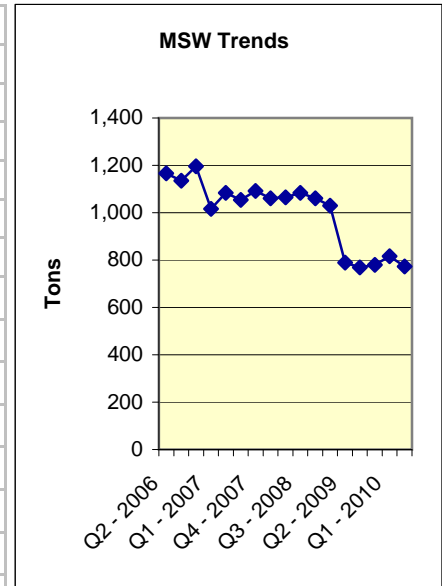
JURISDICTION DEMOGRAPHICS - QUARTERLY
2010 - Q2 8.15.10



North Fair Oaks

Board Member Jim Porter, Public Works, Department Director
 Coordinator Yvette Madera **Total Commercial Accounts 476**
 Voice 650.596.6414
 Cell 650.670.0532
 Email ymadera@republicservices.com

	# Commercial Accounts	# MP/BC Recycling Accounts	# Organics Accounts	Total Recycled Tons ¹	Commercial Recycling Percentage ¹	Total MSW Tons ¹
Q1 - 2006	503	270	17	220	16.2%	1,136
Q2 - 2006	503	275	20	224	16.1%	1,166
Q3 - 2006	503	284	23	291	20.4%	1,135
Q4 - 2006	503	286	28	283	19.1%	1,197
Q1 - 2007	512	295	26	254	20.0%	1,016
Q2 - 2007	512	281	26	256	19.1%	1,083
Q3 - 2007	512	287	26	332	23.9%	1,055
Q4 - 2007	512	290	25	314	22.4%	1,092
Q1 - 2008	518	300	27	309	22.6%	1,061
Q2 - 2008	518	298	27	278	20.7%	1,065
Q3 - 2008	518	301	27	309	22.2%	1,083
Q4 - 2008	518	327	28	379	26.3%	1,061
Q1 - 2009	500	309	28	345	25.1%	1,029
Q2 - 2009	449	310	26	315	28.5%	789
Q3 - 2009	449	298	28	274	26.2%	769
Q4 - 2009	449	320	27	296	27.5%	780
Q1 - 2010	482	320	26	302	27.0%	816
Q2 - 2010	476	279	26	273	26.1%	773



Commentary:

Yvette Madera used Q2 to revisit Fair Oaks schools to make certain the students were doing their part to divert their own refuse. Yvette conducted site visits, waste audits and presented information to students and teachers alike.

Special Events: None in Q2

County Commitment to Recycling:

RecycleWorks creates, delivers, and promotes recycling, composting, waste prevention, procurement, sustainability and green building programs and outreach at County facilities and for residents, employees, businesses and visitors in the unincorporated area of the county and, when appropriate, throughout San Mateo County to encourage, facilitate, and achieve resource conservation and practice responsible environmental

stewardship and to maintain compliance with the California Integrated Waste Management Act (AB 939).

¹ Source is MIS Report

JURISDICTION DEMOGRAPHICS - QUARTERLY

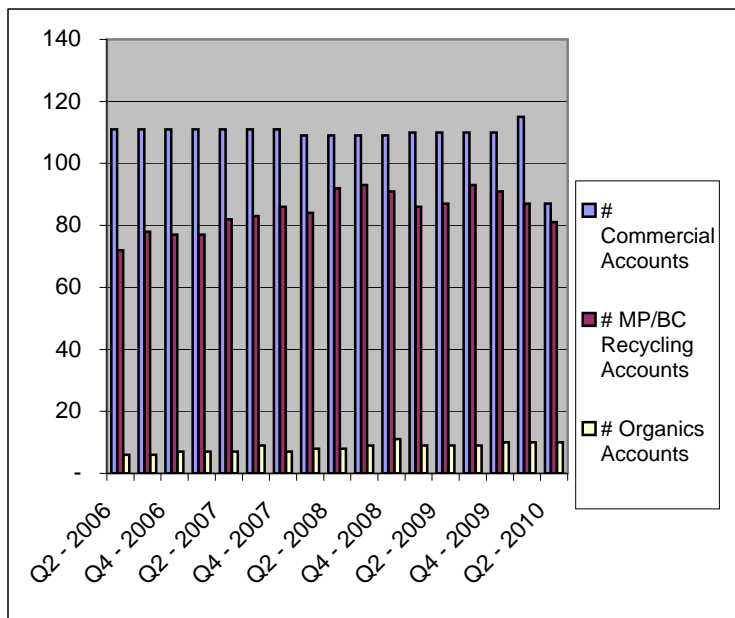
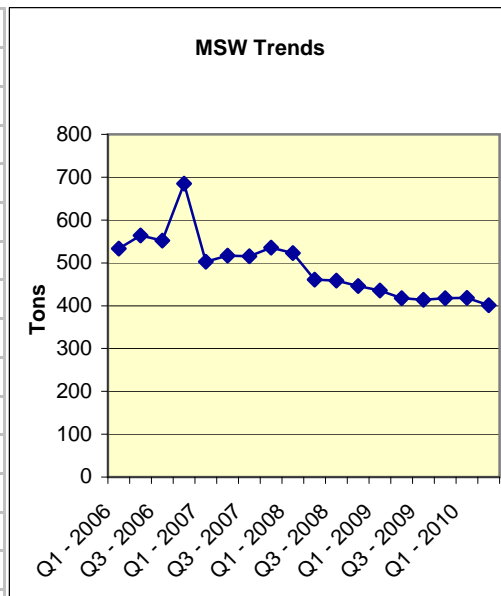
2010 - Q2 8.15.10



Unincorporated Areas of San Mateo County

Board Member Jim Porter, Public Works, Department Director
 Coordinator Gary Cheso Total Commercial Accounts 109
 Voice 650.596.6465
 Cell 650.670.0664
 Email gcheso2@republicservices.com

	# Commercial Accounts	# MP/BC Recycling Accounts	# Organics Accounts	Total Recycled Tons ¹	Commercial Recycling Percentage ¹	Total MSW Tons ¹
Q1 - 2006	111	79	6	165	23.0%	533
Q2 - 2006	111	72	6	223	26.6%	564
Q3 - 2006	111	78	6	196	24.5%	552
Q4 - 2006	111	77	7	162	18.4%	685
Q1 - 2007	111	77	7	148	12.1%	503
Q2 - 2007	111	82	7	175	23.8%	517
Q3 - 2007	111	83	9	189	25.1%	516
Q4 - 2007	111	86	7	156	22.6%	536
Q1 - 2008	109	84	8	154	22.7%	523
Q2 - 2008	109	92	8	136	22.8%	461
Q3 - 2008	109	93	9	167	26.7%	459
Q4 - 2008	109	91	11	232	34.2%	446
Q1 - 2009	110	86	9	217	33.2%	436
Q2 - 2009	110	87	9	176	29.6%	417
Q3 - 2009	110	93	9	162	28.2%	414
Q4 - 2009	110	91	10	170	28.9%	418
Q1 - 2010	115	87	10	180	30.1%	418
Q2 - 2010	87	81	10	180	31.0%	401



Commentary

With the event season coming upon us, Allied Waste Recycling Coordinators were hard at work, encouraging event staff to divert as much discarded material as possible. Gary Cheso was on hand to set up recycling, organics and garbage containers to ensure successful events.

Special Events: Earth Night at Highlands Elementary, Public Works Week BBQ

County Commitment to Recycling:

RecycleWorks creates, delivers, and promotes recycling, composting, waste prevention, procurement, sustainability and green building programs and outreach at County facilities and for residents, employees, businesses and visitors in the unincorporated area of the county and,

when appropriate, throughout San Mateo County to encourage, facilitate, and achieve resource conservation and the practice of responsible environmental stewardship and to maintain compliance with the California Integrated Waste Management Act (AB 939).

¹ Source is MIS Report

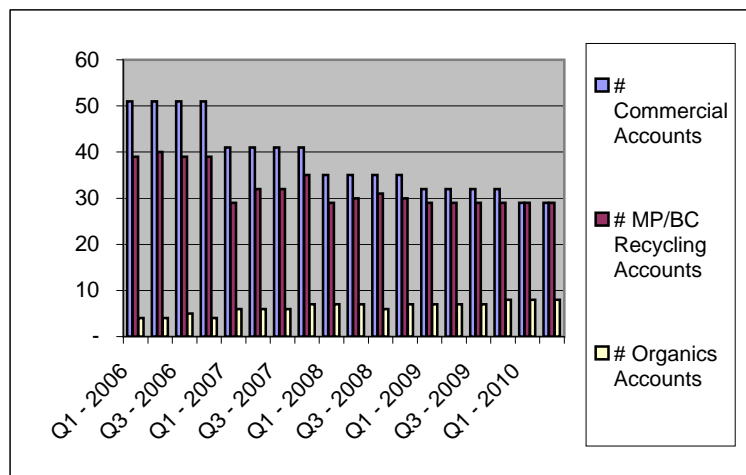
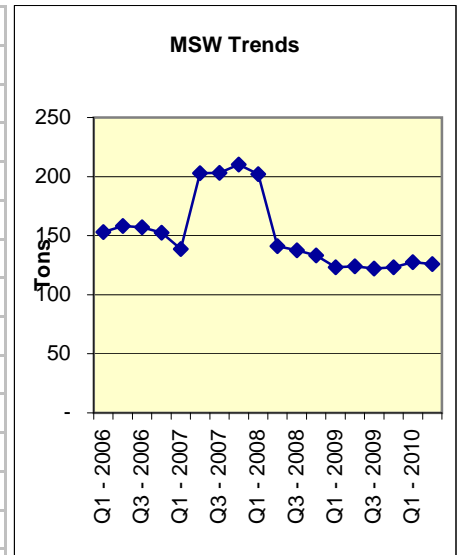
JURISDICTION DEMOGRAPHICS - QUARTERLY
2010 - Q2 8.15.10



West Bay Sanitary District

Board Member Vivian Housen, Interim District Manager
 Coordinator Gary Cheso Total Commercial Accounts 29
 Voice 650.596.6465
 Cell 650.670.0664
 Email gcheso2@republicservices.com

	# Commercial Accounts	# MP/BC Recycling Accounts	# Organics Accounts	Total Recycled Tons ¹	Commercial Recycling Percentage ¹	Total MSW Tons ¹
Q1 - 2006	51	39	4	70	31.3%	153
Q2 - 2006	51	40	4	58	26.9%	158
Q3 - 2006	51	39	5	69	30.6%	157
Q4 - 2006	51	39	4	64	29.4%	152
Q1 - 2007	41	29	6	79	36.2%	139
Q2 - 2007	41	32	6	64	23.9%	203
Q3 - 2007	41	32	6	72	26.1%	203
Q4 - 2007	41	35	7	92	30.4%	210
Q1 - 2008	35	29	7	79	28.2%	202
Q2 - 2008	35	30	7	79	36.0%	141
Q3 - 2008	35	31	6	86	38.4%	138
Q4 - 2008	35	30	7	99	42.6%	133
Q1 - 2009	32	29	7	93	43.0%	123
Q2 - 2009	32	29	7	89	41.8%	124
Q3 - 2009	32	29	7	90	42.5%	122
Q4 - 2009	32	29	8	93	42.9%	123
Q1 - 2010	29	29	8	82	39.1%	128
Q2 - 2010	29	29	8	75	37.4%	126



Commentary:

Gary Cheso spent time with West Bay commercial customers auditing their service, right-sizing containers when necessary, and providing information.

Special Events: None in Q2

District Commitment to Recycling:

¹ Source is MIS Report